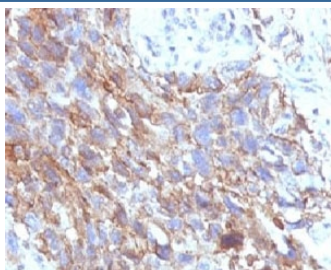


CD56 Antibody [clone CDLA56] (V7149)

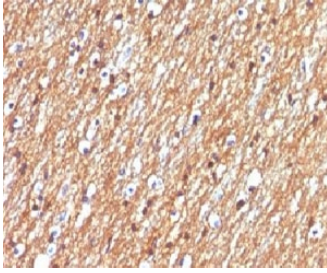
Catalog No.	Formulation	Size
V7149-100UG	0.2 mg/ml in 1X PBS with 0.1 mg/ml BSA (US sourced) and 0.05% sodium azide	100 ug
V7149-20UG	0.2 mg/ml in 1X PBS with 0.1 mg/ml BSA (US sourced) and 0.05% sodium azide	20 ug
V7149SAF-100UG	1 mg/ml in 1X PBS; BSA free, sodium azide free	100 ug
V7149IHC-7ML	Prediluted in 1X PBS with 0.1 mg/ml BSA (US sourced) and 0.05% sodium azide; *For IHC use only*	7 ml

[Bulk quote request](#)

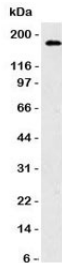
Availability	1-3 business days
Species Reactivity	Human
Format	Purified
Host	Mouse
Clonality	Monoclonal (mouse origin)
Isotype	Mouse IgG1, kappa
Clone Name	CDLA56
Purity	Protein G affinity chromatography
UniProt	P13591
Localization	Cell surface, cytoplasmic
Applications	Western Blot : 0.5-1ug/ml Immunohistochemistry (FFPE) : 0.5-1ug/ml for 30 min at RT (1) Prediluted IHC Only Format : incubate for 30 min at RT (2)
Limitations	This CD56 antibody is available for research use only.



IHC testing of FFPE human lung carcinoma with CD56 antibody.



IHC testing of FFPE human brain tumor with CD56 antibody.



Western blot testing of HCT116 cell lysate and CD56 antibody. Observed molecular weights: 120, 140 and 180 kDa.

Description

CD56/NCAM is a cell adhesion protein which is a member of the immunoglobulin superfamily. It is involved in cell-to-cell interactions as well as cell-matrix interactions during development and differentiation. CD56 has been shown to be involved in development of the nervous system, and for cells involved in the expansion of T cells and dendritic cells which play an important role in immune surveillance. [UniProt]

Application Notes

Titration of the CD56 antibody may be required for optimal performance.

1. FFPE testing requires sections to be boiled in pH6 10mM citrate buffer for 10-20 minutes, followed by cooling at RT for 20 minutes, prior to staining.
2. The prediluted format is supplied in a dropper bottle and is optimized for use in IHC. After epitope retrieval step (if required), drip mAb solution onto the tissue section and incubate at RT for 30 min.

Immunogen

Recombinant human protein was used as the immunogen for the CD56 antibody.

Storage

Store the CD56 antibody at 2-8°C (with azide) or aliquot and store at -20°C or colder (without azide).

