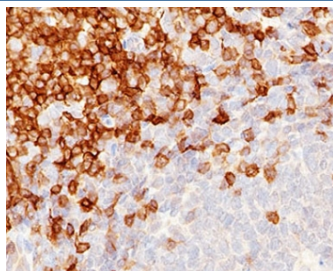


CD5 Antibody [clone CLDA5-1] (V7018)

Catalog No.	Formulation	Size
V7018-100UG	0.2 mg/ml in 1X PBS with 0.1 mg/ml BSA (US sourced) and 0.05% sodium azide	100 ug
V7018-20UG	0.2 mg/ml in 1X PBS with 0.1 mg/ml BSA (US sourced) and 0.05% sodium azide	20 ug
V7018SAF-100UG	1 mg/ml in 1X PBS; BSA free, sodium azide free	100 ug

[Bulk quote request](#)

Species Reactivity	Human
Format	Purified
Host	Mouse
Clonality	Monoclonal (mouse origin)
Isotype	Mouse IgG1, kappa
Clone Name	CLDA5-1
Purity	Protein G affinity chromatography
Buffer	1X PBS, pH 7.4
Gene ID	921 (Human)
Localization	Cell surface
Applications	Immunohistochemistry (FFPE) : 1-2ug/ml for 30 min at RT
Limitations	This CD5 antibody is available for research use only.



IHC testing of FFPE human tonsil stained with CD5 antibody (clone CLDA5-1). Staining of formalin-fixed tissues requires boiling tissue sections in pH 9 10mM Tris with 1mM EDTA for 10-20 min followed by cooling at RT for 20 min.

Description

This antibody recognizes a 67kDa transmembrane protein, which is identified as CD5. The CD5 antigen is found on 95% of thymocytes and 72% of peripheral blood lymphocytes. In lymph nodes, the main reactivity is observed in T cell areas. antibody to CD5 is a pan T-cell marker that also reacts with a range of neoplastic B-cells, e.g. chronic lymphocytic leukemia/small lymphocytic lymphoma (CLL/SLL), mantle cell lymphoma, and a subset (~10%) of diffuse large B-cell lymphoma. CD5 aberrant expression is useful in making a diagnosis of mature T-cell neoplasms. CD5 antibody detection is diagnostic in CLL/SLL within a panel of other B-cell markers, especially one that includes anti-CD23. CD5 antibody is also very useful in differentiating among mature small lymphoid cell malignancies. In addition, antibody to CD5 can be used in distinguishing thymic carcinoma (+) from thymoma (-). CD5 antibody does not react with granulocytes or monocytes.

Application Notes

The concentration stated for each application is a general starting point. Variations in protocols, secondaries and substrates may require the CD5 antibody to be titrated up or down for optimal performance.

Immunogen

Recombinant human protein was used as the immunogen for this CD5 antibody.

Storage

Store the CD5 antibody at 2-8oC (with azide) or aliquot and store at -20oC or colder (without azide).

References (2)