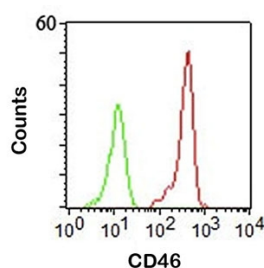


## CD46 Antibody [clone 122.2] (V2190)

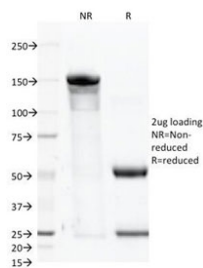
Catalog No.	Formulation	Size
V2190-100UG	0.2 mg/ml in 1X PBS with 0.1 mg/ml BSA (US sourced) and 0.05% sodium azide	100 ug
V2190-20UG	0.2 mg/ml in 1X PBS with 0.1 mg/ml BSA (US sourced) and 0.05% sodium azide	20 ug
V2190SAF-100UG	1 mg/ml in 1X PBS; BSA free, sodium azide free	100 ug

[Bulk quote request](#)

<b>Species Reactivity</b>	Human
<b>Format</b>	Purified
<b>Clonality</b>	Monoclonal (mouse origin)
<b>Isotype</b>	Mouse IgG1, kappa
<b>Clone Name</b>	122.2
<b>Purity</b>	Protein G affinity chromatography
<b>Buffer</b>	1X PBS, pH 7.4
<b>Gene ID</b>	4179
<b>Localization</b>	Cell surface
<b>Applications</b>	Functional Studies (order BSA/sodium Azide-free Format) : Flow Cytometry : 1-2ug/10 <sup>6</sup> cells Immunofluorescence : 1-2ug/ml
<b>Limitations</b>	This <b>CD46 antibody</b> is available for research use only.



FACS staining of human PBMC using CD46 antibody (clone 122.2).



SDS-PAGE Analysis of Purified, BSA-Free CD46 Antibody (clone 122.2). Confirmation of Integrity and Purity of the Antibody.

## Description

CD46 acts as a cofactor for complement factor I, a serine protease which protects autologous cells against complement-mediated injury by cleaving C3b and C4b deposited on host tissue. It may be involved in the fusion of the spermatozoa with the oocyte during fertilization. CD46 acts as a co-stimulatory factor for T-cells which induces the differentiation of CD4+ into T-regulatory 1 cells. T-regulatory 1 cells suppress immune responses by secreting interleukin-10, and therefore are thought to prevent autoimmunity. A number of viral and bacterial pathogens seem to exploit this property and directly induce an immunosuppressive phenotype in T-cells by binding to CD46.

## Application Notes

The concentration stated for each application is a general starting point. Variations in protocols, secondaries and substrates may require the CD46 antibody to be titrated up or down for optimal performance.

## Immunogen

Recombinant human protein was used as the immunogen for this CD46 antibody.

## Storage

Store the CD46 antibody at 2-8°C (with azide) or aliquot and store at -20°C or colder (without azide).

## Alternate Names

AHUS2; CD46 antigen complement regulatory protein; Complement membrane cofactor protein; MCP; Measles virus receptor; Membrane cofactor protein; MIC10; TLX; Trophoblast leucocyte common antigen, CD46 antibody

## References (3)