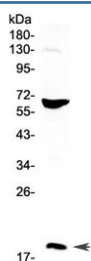


CD40L Antibody (RQ4070)

Catalog No.	Formulation	Size
RQ4070	0.5mg/ml if reconstituted with 0.2ml sterile DI water	100 ug

Bulk quote request

Availability	1-3 business days
Species Reactivity	Human
Format	Antigen affinity purified
Host	Rabbit
Clonality	Polyclonal (rabbit origin)
Isotype	Rabbit IgG
Purity	Antigen affinity purified
Buffer	Lyophilized from 1X PBS with 2% Trehalose and 0.025% sodium azide
UniProt	P29965
Localization	Cytoplasmic, membranous
Applications	Western Blot : 0.5-1ug/ml Direct ELISA : 0.1-0.5ug/ml
Limitations	This CD40L antibody is available for research use only.



Western blot testing of human HepG2 cell lysate with CD40L antibody at 0.5ug/ml. Expected molecular weight: 29-39 kDa (depending on glycosylation level) or ~18 kDa (soluble form).

Description

CD40 ligand (CD40L), also called TRAP and CD154, is a type II membrane protein of 261 amino acids on activated T cells that induces B cell proliferation and immunoglobulin secretion. It has homology with tumour necrosis factor-alpha and -beta, and has important functions in B-cell activation and differentiation. Human CD40L with 5 exons, is mapped to the proximal region of the mouse X chromosome on Xq26.3-27.1, and can be detected on T cells but is absent from B

cells and monocytes. Since CD40L is expressed on platelets and released from them on activation, its predictive value as a marker for clinical outcome and the therapeutic effect of inhibition of glycoprotein IIb /IIIa receptor in patients with acute coronary syndromes was investigated. The soluble CD40L may be involved in the process of restenosis and that it exerts its effect by triggering a complex group of inflammatory reactions on endothelial and mononuclear cells. CD40L plays a central role in the pathophysiology of acute coronary syndromes, and has a role in the pathogenesis of coronary artery lesions.

Application Notes

Optimal dilution of the CD40L antibody should be determined by the researcher.

Immunogen

A recombinant human partial protein corresponding to amino acids E108-L261 was used as the immunogen for the CD40L antibody.

Storage

After reconstitution, the CD40L antibody can be stored for up to one month at 4°C. For long-term, aliquot and store at -20°C. Avoid repeated freezing and thawing.