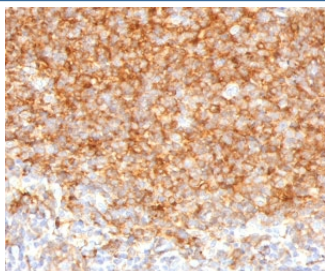


CD40 Antibody [clone CDLA40-1] (V3895)

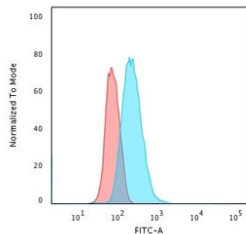
Catalog No.	Formulation	Size
V3895-100UG	0.2 mg/ml in 1X PBS with 0.1 mg/ml BSA (US sourced) and 0.05% sodium azide	100 ug
V3895-20UG	0.2 mg/ml in 1X PBS with 0.1 mg/ml BSA (US sourced) and 0.05% sodium azide	20 ug
V3895SAF-100UG	1 mg/ml in 1X PBS; BSA free, sodium azide free	100 ug

Bulk quote request

Availability	1-3 business days
Species Reactivity	Human
Format	Purified
Clonality	Monoclonal (mouse origin)
Isotype	Mouse IgG2b, kappa
Clone Name	CDLA40-1
Purity	Protein G affinity chromatography
UniProt	P25942
Localization	Cell surface, cytoplasmic
Applications	Flow Cytometry : 1-2ug/10 ⁶ cells Immunohistochemistry (FFPE) : 1-2ug/ml for 30 min at RT
Limitations	This CD40 antibody is available for research use only.



IHC testing of human tonsil with CD40 antibody (clone CDLA40-1). Required HIER: boil tissue sections in 10mM citrate buffer, pH 6, for 10-20 min.



Flow cytometry testing of human U-2 OS cells with CD40 antibody (clone CDLA40-1); Red=isotype control, Blue= CD40 antibody.

Description

Cluster of differentiation 40, CD40 is a costimulatory protein found on antigen presenting cells and is required for their activation. The binding of CD154 (CD40L) on TH cells to CD40 activates antigen presenting cells and induces a variety of downstream effects. [Wiki]

Application Notes

The stated application concentrations are suggested starting points. Titration of the CD40 antibody may be required due to differences in protocols and secondary/substrate sensitivity.

Immunogen

A portion of amino acids 29-107 from the human protein was used as the immunogen for the CD40 antibody.

Storage

Store the CD40 antibody at 2-8oC (with azide) or aliquot and store at -20oC or colder (without azide).