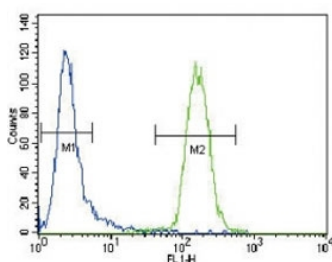


CD4 Antibody (F44339)

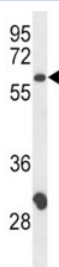
Catalog No.	Formulation	Size
F44339-0.4ML	In 1X PBS, pH 7.4, with 0.09% sodium azide	0.4 ml
F44339-0.08ML	In 1X PBS, pH 7.4, with 0.09% sodium azide	0.08 ml

[Bulk quote request](#)

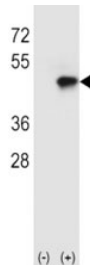
Availability	1-3 business days
Species Reactivity	Human
Format	Antigen affinity purified
Host	Rabbit
Clonality	Polyclonal (rabbit origin)
Isotype	Rabbit Ig
Purity	Antigen affinity
UniProt	P01730
Applications	Western Blot : 1:1000 Flow Cytometry : 1:10-1:50
Limitations	This CD4 antibody is available for research use only.



CD4 antibody flow cytometric analysis of CEM cells (right histogram) compared to a negative control cell (left histogram). FITC-conjugated goat-anti-rabbit secondary Ab was used for the analysis.



Western blot analysis of CD4 antibody and CEM lysate; Expected size: 40~60 kDa depending on glycosylation level



Western blot analysis of CD4 antibody and 293 cell lysate (2 ug/lane) either nontransfected (Lane 1) or transiently transfected with the CD4 gene (2).

Description

CD4 is a single chain transmembraneous glycoprotein (59 kDa) which belongs to the immunoglobulin superfamily. CD4 is present on a subset of T lymphocytes (helper/inducer T cells) and is also expressed at a lower level on monocytes, tissue macrophages and granulocytes. The antigen is involved in binding to MHC class II molecules. The intracellular domain of the antigen is associated with p56lck protein tyrosine kinase.

Application Notes

Titration of the CD4 antibody may be required due to differences in protocols and secondary/substrate sensitivity.

Immunogen

A portion of amino acids 58-86 from the human protein was used as the immunogen for this CD4 antibody.

Storage

Aliquot the CD4 antibody and store frozen at -20oC or colder. Avoid repeated freeze-thaw cycles.