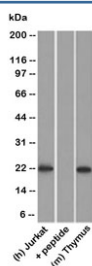


CD3e Antibody (V2033)

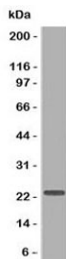
Catalog No.	Formulation	Size
V2033-100UG	0.2 mg/ml in 1X PBS with 0.1 mg/ml BSA (US sourced) and 0.05% sodium azide	100 ug
V2033-20UG	0.2 mg/ml in 1X PBS with 0.1 mg/ml BSA (US sourced) and 0.05% sodium azide	20 ug
V2033SAF-100UG	1 mg/ml in 1X PBS; BSA free, sodium azide free	100 ug

[Bulk quote request](#)

Species Reactivity	Human, Mouse, Rat
Format	Purified
Host	Rabbit
Clonality	Polyclonal (rabbit origin)
Isotype	Rabbit IgG
Purity	Protein A purified CD3e antibody
Buffer	1X PBS, pH 7.4
Gene ID	916
Localization	Cytoplasmic (per AA sequence)
Applications	Western Blot : 1-2ug/ml for 60 min at RT
Limitations	This CD3e antibody is available for research use only.



Western blot testing of human Jurkat lysate in the absence and presence of immunizing peptide, and mouse thymus lysate probed with CD3e antibody.



Western blot testing of Jurkat lysate with CD3e antibody.

Description

This antibody recognizes the epsilon-chain of CD3 (CD3e), which consists of five different polypeptide chains (designated as gamma, delta, epsilon, zeta, and eta) with MW ranging from 16-28kDa. The CD3 complex is closely associated at the lymphocyte cell surface with the Tcell antigen receptor (TCR). Reportedly, CD3 complex is involved in signal transduction to the Tcell interior following antigen recognition. The CD3 antigen is first detectable in early thymocytes and probably represents one of the earliest signs of commitment to the Tcell lineage. In cortical thymocytes, CD3 is predominantly intracytoplasmic. However, in medullary thymocytes, it appears on the Tcell surface. CD3 antigen is a highly specific marker for Tcells, and is present in majority of Tcell neoplasms.

Application Notes

The concentration stated for each application is a general starting point. Variations in protocols, secondaries and substrates may require the CD3e antibody to be titrated up or down for optimal performance.

Immunogen

Amino acids ERPPPVPNPDYEP (156-168) were used as the immunogen for this CD3e antibody. This sequence is from the cytoplasmic portion of the protein.

Storage

Store the CD3e antibody at 2-8°C (with azide) or aliquot and store at -20°C or colder (without azide).

Alternate Names

CD3 epsilon, CD3 TCR complex, T cell antigen receptor complex epsilon subunit of T3, T-cell surface antigen T3/Leu-4 epsilon chain, CD3e antibody

References (2)