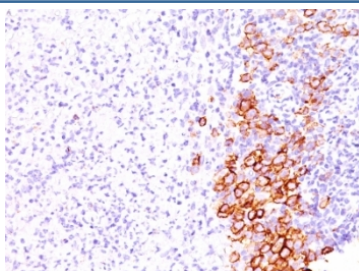


## CD30 Antibody [clone SPM609] (V2993)

| Catalog No.    | Formulation                                                                                     | Size   |
|----------------|-------------------------------------------------------------------------------------------------|--------|
| V2993-100UG    | 0.2 mg/ml in 1X PBS with 0.1 mg/ml BSA (US sourced) and 0.05% sodium azide                      | 100 ug |
| V2993-20UG     | 0.2 mg/ml in 1X PBS with 0.1 mg/ml BSA (US sourced) and 0.05% sodium azide                      | 20 ug  |
| V2993SAF-100UG | 1 mg/ml in 1X PBS; BSA free, sodium azide free                                                  | 100 ug |
| V2993IHC-7ML   | Prediluted in 1X PBS with 0.1 mg/ml BSA (US sourced) and 0.05% sodium azide; *For IHC use only* | 7 ml   |

[Bulk quote request](#)

|                           |                                                         |
|---------------------------|---------------------------------------------------------|
| <b>Availability</b>       | 1-3 business days                                       |
| <b>Species Reactivity</b> | Human                                                   |
| <b>Format</b>             | Purified                                                |
| <b>Host</b>               | Mouse                                                   |
| <b>Clonality</b>          | Monoclonal (mouse origin)                               |
| <b>Isotype</b>            | Mouse IgG1, kappa                                       |
| <b>Clone Name</b>         | SPM609                                                  |
| <b>Purity</b>             | Protein G affinity chromatography                       |
| <b>UniProt</b>            | P28908                                                  |
| <b>Localization</b>       | Cell surface, cytoplasmic                               |
| <b>Applications</b>       | Immunohistochemistry (FFPE) : 1-2ug/ml for 30 min at RT |
| <b>Limitations</b>        | This CD30 antibody is available for research use only.  |



IHC: Formalin-fixed, paraffin-embedded human Hodgkin's lymphoma stained with CD30 antibody (SPM609).

## Description

Recognizes a single chain glycoprotein of 105/120kDa, identified as CD30/Ki-1. CD30 is synthesized as a 90kDa precursor, which is processed in the Golgi complex into a membrane-bound phosphorylated mature 105/120kDa glycoprotein. In Hodgkin's disease, CD30/Ki-1 antigen is expressed by mononuclear-Hodgkin and multinucleated Reed-Sternberg cells. It is also expressed by the tumor cells of a majority of anaplastic large cell lymphomas as well as by a varying proportion of activated T and B cells. This mAb distinguishes large cell lymphomas derived from activated lymphoid cells from histiocytic malignancies and lymphomas derived from resting and precursor lymphoid cells or from anaplastic carcinomas. About one third of the Ki-1 positive lymphomas lack the leukocyte common antigen (CD45).

## Application Notes

Optimal dilution of the CD30 antibody should be determined by the researcher.

1. Staining of formalin-fixed tissues requires boiling tissue sections in 10mM Tris with 1mM EDTA, pH 9.0, for 10-20 min followed by cooling at RT for 20 min.
2. The prediluted format is supplied in a dropper bottle and is optimized for use in IHC. After epitope retrieval step (if required), drip mAb solution onto the tissue section and incubate at RT for 30 min.

## Immunogen

Recombinant human protein was used as the immunogen for the CD30 antibody.

## Storage

Store the CD30 antibody at 2-8°C (with azide) or aliquot and store at -20°C or colder (without azide).