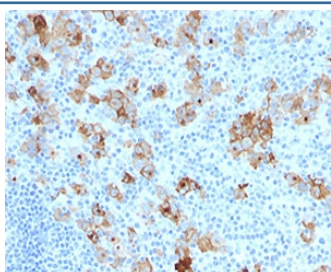


CD30 Antibody [clone SPM121] (V2991S)

Catalog No.	Formulation	Size
V2991S-0.5ML	Bioreactor concentrate with 0.05% sodium azide	0.5 ml
V2991S-0.1ML	Bioreactor concentrate with 0.05% sodium azide	0.1 ml
V2991IHC-7ML	Prediluted in 1X PBS, 0.05% sodium azide; *For IHC use only*	7 ml

[Bulk quote request](#)

Availability	1-3 business days
Species Reactivity	Human
Format	Bioreactor concentrate
Clonality	Monoclonal (mouse origin)
Isotype	Mouse IgG1, kappa
Clone Name	SPM121
Purity	Unpurified high titer supernatant
UniProt	P28908
Localization	Cell surface, cytoplasmic
Applications	Immunohistochemistry (FFPE) : 1:50-1:100 for 30 min at RT
Limitations	This CD30 antibody is available for research use only.



IHC testing of formalin-fixed, paraffin-embedded human Hodgkin's lymphoma stained with CD30 antibody (clone SPM121).

Description

Recognizes a single chain glycoprotein of 105/120kDa, identified as CD30/Ki-1. CD30 is synthesized as a 90kDa precursor, which is processed in the Golgi complex into a membrane-bound phosphorylated mature 105/120kDa glycoprotein. In Hodgkin's disease, CD30/Ki-1 antigen is expressed by mononuclear-Hodgkin and multinucleated Reed-Sternberg cells. It is also expressed by the tumor cells of a majority of anaplastic large cell lymphomas as well as by a

varying proportion of activated T and B cells. This mAb distinguishes large cell lymphomas derived from activated lymphoid cells from histiocytic malignancies and lymphomas derived from resting and precursor lymphoid cells or from anaplastic carcinomas. About one third of the Ki-1 positive lymphomas lack the leukocyte common antigen (CD45).

Application Notes

Optimal dilution of the CD30 antibody should be determined by the researcher.

1. Staining of formalin-fixed tissues requires boiling tissue sections in 10mM Tris with 1mM EDTA, pH 9.0, for 10-20 min followed by cooling at RT for 20 min.
2. The prediluted format is supplied in a dropper bottle and is optimized for use in IHC. After epitope retrieval step (if required), drip mAb solution onto the tissue section and incubate at RT for 30 min.

Immunogen

A Co cell line established from a patient with Hodgkin s disease of T-cell lineage was used as the immunogen for the CD30 antibody.

Storage

Store the CD30 antibody at 2-8oC (with azide) or aliquot and store at -20oC or colder (without azide).