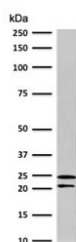


CD3 epsilon Antibody [clone CDLA3e-1] (V3761)

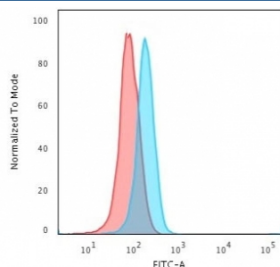
Catalog No.	Formulation	Size
V3761-100UG	0.2 mg/ml in 1X PBS with 0.1 mg/ml BSA (US sourced) and 0.05% sodium azide	100 ug
V3761-20UG	0.2 mg/ml in 1X PBS with 0.1 mg/ml BSA (US sourced) and 0.05% sodium azide	20 ug
V3761SAF-100UG	1 mg/ml in 1X PBS; BSA free, sodium azide free	100 ug

[Bulk quote request](#)

Availability	1-3 business days
Species Reactivity	Human
Format	Purified
Host	Mouse
Clonality	Monoclonal (mouse origin)
Isotype	Mouse IgG1, kappa
Clone Name	CDLA3e-1
Purity	Protein G affinity chromatography
UniProt	P07766
Localization	Cell surface and cytoplasmic
Applications	Flow Cytometry : 1-2ug/10 ⁶ cells Western Blot : 1-2ug/ml
Limitations	This CD3 epsilon antibody is available for research use only.



Western blot testing of human Jurkat cells with CD3e antibody (clone CDLA3e-1).
Expected molecular weight ~23 kDa.



Flow cytometry testing of human Jurkat cells with CD3e antibody (clone CDLA3e-1); Red=isotype control, Blue= CD3e antibody.

Description

This antibody recognizes the epsilon chain of CD3, which consists of five different polypeptide chains (designated as gamma, delta, epsilon, zeta, and eta) with MW ranging from 16-28kDa. The CD3 complex is closely associated at the lymphocyte cell surface with the T cell antigen receptor (TCR). Reportedly, CD3 complex is involved in signal transduction to the T cell interior following antigen recognition. The CD3 antigen is first detectable in early thymocytes and probably represents one of the earliest signs of commitment to the T cell lineage. In cortical thymocytes, CD3 is predominantly intracytoplasmic. However, in medullary thymocytes, it appears on the T cell surface. CD3 antigen is a highly specific marker for T cells, and is present in majority of T cell neoplasms.

Application Notes

The stated application concentrations are suggested starting points. Titration of the CD3 epsilon antibody may be required due to differences in protocols and secondary/substrate sensitivity.

Immunogen

A portion of amino acids 23-119 were used as the immunogen for the CD3 epsilon antibody.

Storage

Store the CD3 epsilon antibody at 2-8oC (with azide) or aliquot and store at -20oC or colder (without azide).