

CD3 Antibody [clone B-B12] (V2379)

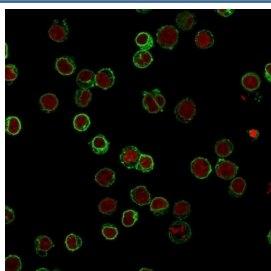
| Catalog No. | Formulation | Size |
|----------------|--|--------|
| V2379-100UG | 0.2 mg/ml in 1X PBS with 0.1 mg/ml BSA (US sourced) and 0.05% sodium azide | 100 ug |
| V2379-20UG | 0.2 mg/ml in 1X PBS with 0.1 mg/ml BSA (US sourced) and 0.05% sodium azide | 20 ug |
| V2379SAF-100UG | 1 mg/ml in 1X PBS; BSA free, sodium azide free | 100 ug |



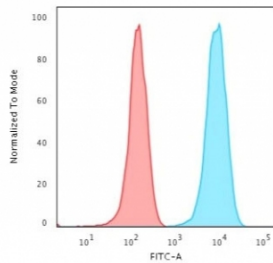
Citations (2)

[Bulk quote request](#)

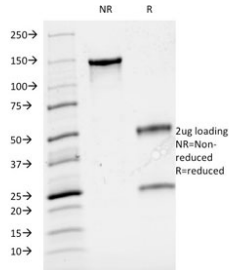
| | |
|--------------------|---|
| Availability | 1-3 business days |
| Species Reactivity | Human |
| Format | Purified |
| Clonality | Monoclonal (mouse origin) |
| Isotype | Mouse IgG1, kappa |
| Clone Name | B-B12 |
| Purity | Protein G affinity chromatography |
| Buffer | 1X PBS, pH 7.4 |
| UniProt | P07766 |
| Localization | Cell surface and cytoplasmic |
| Applications | Flow Cytometry : 1-2ug/10 ⁶ cells Immunofluorescence : 1-2ug/ml |
| Limitations | The CD3 antibody is available for research use only. |



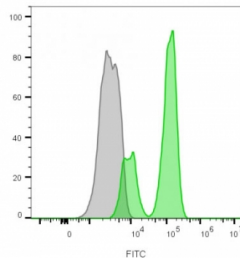
Immunofluorescent staining of FFPE human Jurkat cells with CD3 antibody (green, clone B-B12) and Reddot nuclear stain (red).



Flow cytometry testing of human Jurkat cells with CD3 antibody (clone B-B12); Red=isotype control, Blue= CD3 antibody.



SDS-PAGE analysis of purified, BSA-free CD3 antibody (clone B-B12) as confirmation of integrity and purity.



Flow cytometry staining of lymphocyte-gated human PBM cells with CF488A-labeled CD3e antibody (clone B-B12). Gray=unstained, Green=CF488A-CD3e antibody.

Description

CD3 is expressed, typically at high levels, on peripheral T cells and majority of T cell neoplasms. Thymocytes express CD3 at different level on the cell surface in the course of differentiation and, in cortical thymus, CD3 is predominantly Intracytoplasmic. The CD3 complex is closely associated at the lymphocyte cell surface with T cell antigen receptor (TCR) and is involved in transducing antigen-recognition signals into cytoplasm of T cells and in regulating the cell surface expression of the TCR complex.

Application Notes

Optimal dilution of the CD3 antibody for a specific application should be determined by researcher.

Immunogen

Human T cell leukemia cells were used as immunogen for the CD3 antibody.

Storage

CD3 antibody with azide can be stored at 2-8°C. The azide-free format should be aliquoted and stored at -20°C or colder.

