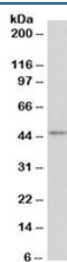


Cd28 Antibody (R34402)

| Catalog No. | Formulation | Size |
|--------------|---|--------|
| R34402-100UG | 0.5 mg/ml in 1X TBS, pH7.3, with 0.5% BSA (US sourced) and 0.02% sodium azide | 100 ug |

[Bulk quote request](#)

| | |
|--------------------|--|
| Availability | 1-3 business days |
| Species Reactivity | Mouse |
| Format | Antigen affinity purified |
| Clonality | Polyclonal (goat origin) |
| Isotype | Goat Ig |
| Purity | Antigen affinity |
| Gene ID | 12487 |
| Applications | Western Blot : 0.3-1ug/ml ELISA (peptide) LOD : 1:16000 |
| Limitations | This Cd28 antibody is available for research use only. |



Western blot testing of mouse thymus lysate with Cd28 antibody at 0.3ug/ml. Expected molecular weight depending on level of glycosylation: ~25-44 kDa (monomer), ~50-90kDa (dimer).

Description

Additional name(s) for this target protein: T-cell-specific surface glycoprotein CD28 antibody

Application Notes

Optimal dilution of the Cd28 antibody should be determined by the researcher.

Immunogen

Amino acids KEKHLCHTQSSPK were used as the immunogen for this Cd28 antibody. The amino acid sequence used as

immunogen is from the extracellular portion of the protein.

Storage

Aliquot and store the Cd28 antibody at -20oC.