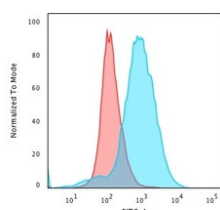


CD28 Antibody [clone CB28] (V2051)

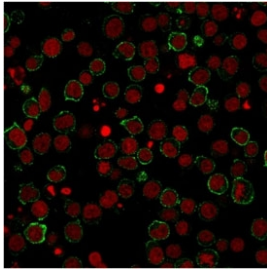
Catalog No.	Formulation	Size
V2051-100UG	0.2 mg/ml in 1X PBS with 0.1 mg/ml BSA (US sourced) and 0.05% sodium azide	100 ug
V2051-20UG	0.2 mg/ml in 1X PBS with 0.1 mg/ml BSA (US sourced) and 0.05% sodium azide	20 ug
V2051SAF-100UG	1 mg/ml in 1X PBS; BSA free, sodium azide free	100 ug

[Bulk quote request](#)

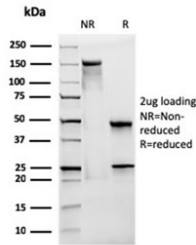
Species Reactivity	Human
Format	Purified
Host	Mouse
Clonality	Monoclonal (mouse origin)
Isotype	Mouse IgG1, kappa
Clone Name	CB28
Purity	Protein G affinity chromatography
Buffer	1X PBS, pH 7.4
Gene ID	940
Localization	Cell surface
Applications	Flow Cytometry : 1-2ug/10 ⁶ cells Immunofluorescence : 1-2ug/ml Functional Studies (order BSA/sodium Azide-free Format) :
Limitations	This CD28 antibody is available for research use only.



Flow cytometry staining of PFA-fixed human Jukat cells with CD28 antibody (clone CB28); Red=isotype control, Blue= CD28 antibody.



Immunofluorescent staining of PFA-fixed human Jurkat cells with CD28 antibody (clone CB28, green) and Reddot nuclear stain (red).



SDS-PAGE analysis of purified, BSA-free CD28 antibody (clone CB28) as confirmation of integrity and purity.

Description

This antibody recognizes a glycoprotein of 44-88kDa, which is identified as CD28. It is the critical Tcell co-stimulatory receptor which provides to the cell the important second activation signal by binding CD80 and CD86 that are expressed by antigen presenting cells. Besides its co-stimulation role, CD28 functions in preventing Tcells from anergic hyporesponsive state or from undergoing premature apoptotic cell death. it is also expressed on human fetal NK cells and some NK cell lines, whereas on murine NK cells the CD28 expression is much broader.

Application Notes

The concentration stated for each application is a general starting point. Variations in protocols, secondaries and substrates may require the CD28 antibody to be titrated up or down for optimal performance.

Immunogen

Recombinant human protein was used as the immunogen for this CD28 antibody.

Storage

Store the CD28 antibody at 2-8oC (with azide) or aliquot and store at -20oC or colder (without azide).

Alternate Names

Tp44, CD28 antibody

References (3)