

CD27 Antibody (F43213)

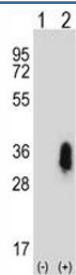
Catalog No.	Formulation	Size
F43213-0.4ML	In 1X PBS, pH 7.4, with 0.09% sodium azide	0.4 ml
F43213-0.08ML	In 1X PBS, pH 7.4, with 0.09% sodium azide	0.08 ml

[Bulk quote request](#)

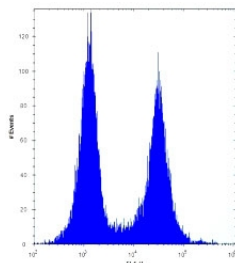
Availability	1-3 business days
Species Reactivity	Human
Format	Antigen affinity purified
Host	Rabbit
Clonality	Polyclonal (rabbit origin)
Isotype	Rabbit Ig
Purity	Antigen affinity
UniProt	P26842
Localization	Cytoplasmic, membranous
Applications	Western Blot : 1:1000 Flow Cytometry : 1:10-1:50 ELISA (peptide) : suitable
Limitations	This CD27 antibody is available for research use only.

72
55
36
28
17

CD27 antibody western blot analysis in Ramos lysate. Predicted molecular weight
~29/45 kDa (unmodified/glycosylated)



Western blot analysis of CD27 antibody and 293 cell lysate either nontransfected (Lane 1) or transiently transfected (2) with the CD27 gene.



CD27 antibody flow cytometric analysis of Ramos cells (right histogram) compared to a [negative control](#) (left histogram). FITC-conjugated donkey-anti-rabbit secondary Ab was used for the analysis.

Description

The protein encoded by this gene is a member of the TNF-receptor superfamily. This receptor is required for generation and long-term maintenance of T cell immunity. It binds to ligand CD70, and plays a key role in regulating B-cell activation and immunoglobulin synthesis. This receptor transduces signals that lead to the activation of NF-kappaB and MAPK8/JNK. Adaptor proteins TRAF2 and TRAF5 have been shown to mediate the signaling process of this receptor. CD27-binding protein (SIVA), a proapoptotic protein, can bind to this receptor and is thought to play an important role in the apoptosis induced by this receptor.

Application Notes

Titration of the CD27 antibody may be required due to differences in protocols and secondary/substrate sensitivity.

Immunogen

A portion of amino acids 196-225 from the human protein was used as the immunogen for this CD27 antibody.

Storage

Aliquot the CD27 antibody and store frozen at -20°C or colder. Avoid repeated freeze-thaw cycles.