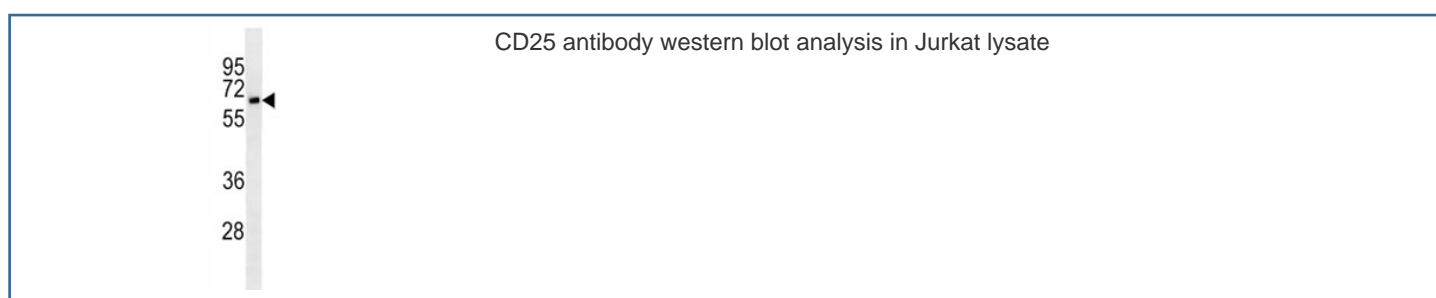


## CD25 Antibody [clone 7G7B6] (F53547)

Catalog No.	Formulation	Size
F53547-0.1ML	In ascites with 0.09% sodium azide	0.1 ml

**Bulk quote request**

<b>Availability</b>	1-3 business days
<b>Species Reactivity</b>	Human
<b>Format</b>	Ascites
<b>Clonality</b>	Monoclonal (mouse origin)
<b>Isotype</b>	Mouse IgG2a
<b>Clone Name</b>	7G7B6
<b>Purity</b>	Ascites
<b>UniProt</b>	P01589
<b>Applications</b>	Western Blot : 1:100-1:800
<b>Limitations</b>	This CD25 antibody is available for research use only.



### Description

The interleukin 2 (IL2) receptor alpha (IL2RA) and beta (IL2RB) chains, together with the common gamma chain (IL2RG), constitute the high-affinity IL2 receptor. Homodimeric alpha chains (IL2RA) result in low-affinity receptor, while homodimeric beta (IL2RB) chains produce a medium-affinity receptor. Normally an integral-membrane protein, soluble IL2RA has been isolated and determined to result from extracellular proteolysis. Alternately-spliced IL2RA mRNAs have been isolated, but the significance of each is presently unknown. Mutations in this gene are associated with interleukin 2 receptor alpha deficiency.

### Application Notes

Titration of the CD25 antibody may be required due to differences in protocols and secondary/substrate sensitivity.

## **Immunogen**

A purified His-tagged recombinant protein fragment was used to produced this CD25 antibody.

## **Storage**

Aliquot the CD25 antibody and store frozen at -20oC or colder. Avoid repeated freeze-thaw cycles.