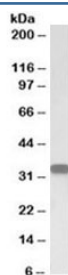


CD20 Antibody (R33308)

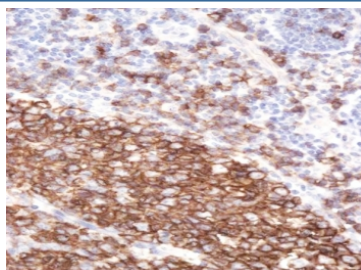
Catalog No.	Formulation	Size
R33308-100UG	0.5 mg/ml in 1X TBS, pH7.3, with 0.5% BSA (US sourced) and 0.02% sodium azide	100 ug

[Bulk quote request](#)

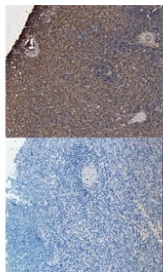
Availability	1-3 business days
Species Reactivity	Human
Format	Antigen affinity purified
Clonality	Polyclonal (goat origin)
Isotype	Goat Ig
Purity	Antigen affinity
Gene ID	931
Applications	Western Blot : 0.03-0.1ug/ml Immunohistochemistry (FFPE) : 2-7ug/ml ELISA (peptide) LOD : 1:128000
Limitations	This CD20 antibody is available for research use only.



Western blot testing of human lymph node lysate with CD20 antibody at 0.05ug/ml.
Predicted molecular weight ~33 kDa.



IHC staining of FFPE human tonsil with CD20 antibody at 2ug/ml. HIER: steamed with pH6 citrate buffer, HRP-staining.



IHC staining of FFPE human tonsil with CD20 antibody at 7ug/ml. HIER: steamed with pH6 citrate buffer, HRP-staining.

Description

Additional name(s) for this target protein: Membrane-spanning 4-domains, subfamily A, member 1; MS4A1

Application Notes

Optimal dilution of the CD20 antibody should be determined by the researcher.

Immunogen

Amino acids CQDQESSPIENDSSP were used as the immunogen for this CD20 antibody.

Storage

Aliquot and store the CD20 antibody at -20oC.