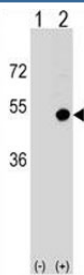


CD1d Antibody Rabbit Polyclonal (F45250)

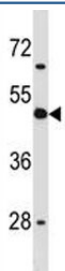
Catalog No.	Formulation	Size
F45250-0.4ML	In 1X PBS, pH 7.4, with 0.09% sodium azide	0.4 ml
F45250-0.08ML	In 1X PBS, pH 7.4, with 0.09% sodium azide	0.08 ml

[Bulk quote request](#)

Availability	1-3 business days
Species Reactivity	Human
Format	Antigen affinity purified
Host	Rabbit
Clonality	Polyclonal (rabbit origin)
Isotype	Rabbit Ig
Purity	Antigen affinity
UniProt	P15813
Applications	Western Blot : 1:1000
Limitations	This CD1d antibody is available for research use only.



CD1d Antibody Rabbit Polyclonal used in western blot with 293 cell lysate (2 ug/lane) either non-transfected (Lane 1) or transiently transfected (2) with the CD1D gene.



CD1d antibody western blot analysis in human K562 cell lysate.

Description

This gene encodes a divergent member of the CD1 family of transmembrane glycoproteins, which are structurally related to the major histocompatibility complex (MHC) proteins and form heterodimers with beta-2-microglobulin. CD1d Antibody Rabbit polyclonal detects CD1d protein in western blot. The CD1 proteins mediate the presentation of primarily lipid and glycolipid antigens of self or microbial origin to T cells. The human genome contains five CD1 family genes organized in a cluster on chromosome 1. The CD1 family members are thought to differ in their cellular localization and specificity for particular lipid ligands. The protein encoded by this gene localizes to late endosomes and lysosomes via a tyrosine-based motif in the cytoplasmic tail.

Application Notes

Titration of the CD1d Antibody Rabbit Polyclonal may be required due to differences in protocols and secondary/substrate sensitivity.

Immunogen

A portion of amino acids 177-206 from the human protein was used as the immunogen for this CD1d antibody.

Storage

Aliquot the CD1d antibody and store frozen at -20°C or colder. Avoid repeated freeze-thaw cycles.