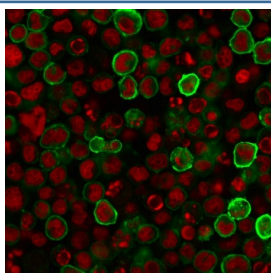


CD15 Antibody [clone MY-1] (V8496)

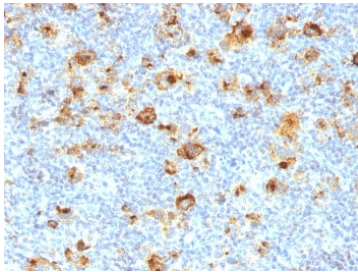
Catalog No.	Formulation	Size
V8496-100UG	0.2 mg/ml in 1X PBS with 0.1 mg/ml BSA (US sourced) and 0.05% sodium azide	100 ug
V8496-20UG	0.2 mg/ml in 1X PBS with 0.1 mg/ml BSA (US sourced) and 0.05% sodium azide	20 ug
V8496SAF-100UG	1 mg/ml in 1X PBS; BSA free, sodium azide free	100 ug

[Bulk quote request](#)

Availability	1-3 business days
Species Reactivity	Human
Format	Purified
Clonality	Monoclonal (mouse origin)
Isotype	Mouse IgM, kappa
Clone Name	MY-1
Purity	Protein G affinity chromatography
UniProt	P22083
Localization	Cell surface and granular paranuclear
Applications	Immunofluorescence : 1-2ug/ml Immunohistochemistry (FFPE) : 1-2ug/ml for 30 minutes at RT
Limitations	This CD15 antibody is available for research use only.



Immunofluorescent staining of human U937 cells with CD15 antibody (clone MY-1, green) and Reddot nuclear stain (red).



IHC staining of FFPE human Hodgkin's lymphoma with CD15 antibody (clone MY-1).
HIER: boil tissue sections in pH 9 10mM Tris with 1mM EDTA for 20 min and allow to cool before testing.

Description

CD15 plays a role in mediating phagocytosis, bactericidal activity, and chemotaxis. It is present on 95% of granulocytes including neutrophils and eosinophils and to a lesser degree on monocytes. In addition, CD15 is expressed in Reed-Sternberg cells and some epithelial cells. CD15 antibody is very useful in the identification of Hodgkin's disease. CD15 is occasionally expressed in large cell lymphomas of both B and T phenotypes which otherwise have a quite distinct histological appearance.

Application Notes

Optimal dilution of the CD15 antibody should be determined by the researcher.

Immunogen

Purified neutrophils from normal human peripheral blood were used as the immunogen for the CD15 antibody.

Storage

Store the CD15 antibody at 2-8°C (with azide) or aliquot and store at -20°C or colder (without azide).