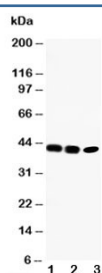


CCR6 Antibody (R30301)

Catalog No.	Formulation	Size
R30301	0.5mg/ml if reconstituted with 0.2ml sterile DI water	100 ug

Bulk quote request

Availability	1-3 business days
Species Reactivity	Human, Mouse, Rat
Format	Antigen affinity purified
Host	Rabbit
Clonality	Polyclonal (rabbit origin)
Isotype	Rabbit IgG
Purity	Antigen affinity
Buffer	Lyophilized from 1X PBS with 2.5% BSA and 0.025% sodium azide/thimerosal
UniProt	P51684
Applications	Western Blot : 0.5-1ug/ml
Limitations	This CCR6 antibody is available for research use only.



Western blot testing of CCR6 antibody and Lane 1: rat liver; 2: human SW620; 3: human CEM cell lysate.

Description

CCR6, also termed CKRL3, encodes a 369-amino acid polypeptide with greatest similarity to the family of alpha-chemokine-binding receptors. Unlike most chemokine receptor genes, it is encoded by more than 1 exon. Weakly expressed as a 4-kb transcript in spleen, lymph nodes, peripheral blood lymphocytes and appendix, CCR6 gene is located at 6q27. As the receptor for MIP-3-alpha, its activation leads to phospholipase C-dependent intracellular Ca(2+) mobilization. Additionally, CCR6 are markedly upregulated in psoriasis.

Application Notes

The stated application concentrations are suggested starting amounts. Titration of the CCR6 antibody may be required due to differences in protocols and secondary/substrate sensitivity.

Immunogen

An amino acid sequence from the C-terminus of human CCR6 (RQTSETADNDNASSFTM) was used as the immunogen for this CCR6 antibody.

Storage

After reconstitution, the CCR6 antibody can be stored for up to one month at 4°C. For long-term, aliquot and store at -20°C. Avoid repeated freezing and thawing.