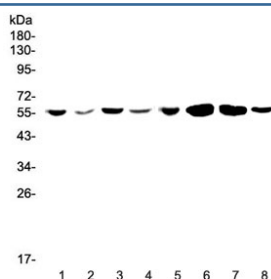


CCR3 Antibody (RQ4331)

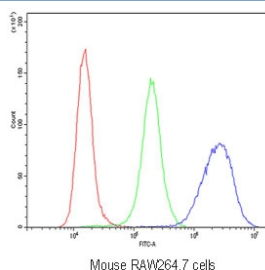
Catalog No.	Formulation	Size
RQ4331	0.5mg/ml if reconstituted with 0.2ml sterile DI water	100 ug

Bulk quote request

Availability	1-3 business days
Species Reactivity	Human, Mouse, Rat
Format	Antigen affinity purified
Host	Rabbit
Clonality	Polyclonal (rabbit origin)
Isotype	Rabbit IgG
Purity	Antigen affinity purified
Buffer	Lyophilized from 1X PBS with 2% Trehalose and 0.025% sodium azide
UniProt	P51677
Localization	Cell membrane
Applications	Western Blot : 0.5-1ug/ml Flow Cytometry : 1-3ug/10 ⁶ cells
Limitations	This CCR3 antibody is available for research use only.



Western blot testing of human 1) Jurkat, 2) HepG2, 3) MCF7, 4) U-87 MG, 5) CCRF-CEM, 6) rat brain, 7) mouse brain and 8) mouse testis lysate with CCR3 antibody at 0.5ug/ml. Expected molecular weight: 40~55 kDa.



Flow cytometry testing of mouse RAW264.7 cells with CCR3 antibody at 1ug/10⁶ cells (blocked with goat sera); Red=cells alone, Green=isotype control, Blue=CCR3 antibody.

Description

C-C chemokine receptor type 3, also called CCR3 or CKR3 is a protein that in humans is encoded by the CCR3 gene. The protein encoded by this gene is a receptor for C-C type chemokines. It belongs to family 1 of the G protein-coupled receptors. This gene and seven other chemokine receptor genes form a chemokine receptor gene cluster on the chromosomal region 3p21. This receptor binds and responds to a variety of chemokines, including eotaxin (CCL11), eotaxin-3 (CCL26), MCP-3 (CCL7), MCP-4 (CCL13), and RANTES (CCL5). It is highly expressed in eosinophils and basophils, and is also detected in TH1 and TH2 cells, as well as in airway epithelial cells. This receptor may contribute to the accumulation and activation of eosinophils and other inflammatory cells in the allergic airway. It is also known to be an entry co-receptor for HIV-1. Alternatively spliced transcript variants have been described.

Application Notes

Optimal dilution of the CCR3 antibody should be determined by the researcher.

Immunogen

Amino acids MTTSLDTVETFGTTSYYDDVGLLCEKADTRALMA were used as the immunogen for the CCR3 antibody.

Storage

After reconstitution, the CCR3 antibody can be stored for up to one month at 4oC. For long-term, aliquot and store at -20oC. Avoid repeated freezing and thawing.