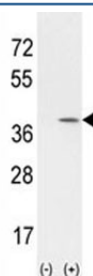


## CCND1 Antibody (F40063)

Catalog No.	Formulation	Size
F40063-0.4ML	In 1X PBS, pH 7.4, with 0.09% sodium azide	0.4 ml
F40063-0.08ML	In 1X PBS, pH 7.4, with 0.09% sodium azide	0.08 ml

[Bulk quote request](#)

<b>Availability</b>	1-3 business days
<b>Species Reactivity</b>	Human
<b>Format</b>	Purified
<b>Host</b>	Rabbit
<b>Clonality</b>	Polyclonal (rabbit origin)
<b>Isotype</b>	Rabbit Ig
<b>Purity</b>	Purified
<b>UniProt</b>	Q6FI00
<b>Applications</b>	Western Blot : 1:1000
<b>Limitations</b>	This CCND1 antibody is available for research use only.



Western blot analysis of CCND1 antibody and 293 cell lysate (2 ug/lane) either nontransfected (Lane 1) or transiently transfected with the CCND1 gene (2). Predicted molecular weight: 32-36 kDa.

## Description

CCND1 belongs to the highly conserved cyclin family, whose members are characterized by a dramatic periodicity in protein abundance throughout the cell cycle. Cyclins function as regulators of CDK kinases. Different cyclins exhibit distinct expression and degradation patterns which contribute to the temporal coordination of each mitotic event. This cyclin forms a complex with and functions as a regulatory subunit of CDK4 or CDK6, whose activity is required for cell cycle G1/S transition. This protein has been shown to interact with tumor suppressor protein Rb and the expression of this gene is regulated positively by Rb. Mutations, amplification and overexpression of the gene encoding this protein, which alters cell cycle progression, are observed frequently in a variety of tumors and may contribute to tumorigenesis.

## Application Notes

Titration of the CCND1 antibody may be required due to differences in protocols and secondary/substrate sensitivity.

## Immunogen

A portion of amino acids 147-175 from the human protein was used as the immunogen for this CCND1 antibody.

## Storage

Aliquot the CCND1 antibody and store frozen at -20oC or colder. Avoid repeated freeze-thaw cycles.