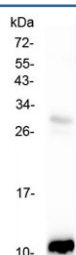


CCL2 Antibody / MCP1 (RQ4664)

Catalog No.	Formulation	Size
RQ4664	0.5mg/ml if reconstituted with 0.2ml sterile DI water	100 ug

Bulk quote request

Availability	1-3 business days
Species Reactivity	Rat
Format	Antigen affinity purified
Host	Rabbit
Clonality	Polyclonal (rabbit origin)
Isotype	Rabbit IgG
Purity	Antigen affinity purified
Buffer	Lyophilized from 1X PBS with 2% Trehalose
UniProt	P14844
Applications	Western Blot : 0.5-1ug/ml ELISA (Capture) : 1-5ug/ml (recombinant rat protein)
Limitations	This CCL2 antibody is available for research use only.



Western blot testing of rat pancreas with CCL2 antibody at 0.5ug/ml. Expected molecular weight ~11 kDa (precursor), ~9 kDa (mature).

Description

Monocyte chemoattractant protein-1 (MCP-1), a member of the chemokine (chemotactic cytokine) family, is a potent monocyte agonist that is upregulated by oxidized lipids. MCP-1 is also known as CCL2, SCYA2, MCAF. MCAF is a member of family of factors involved in immune and inflammatory responses. The amino acid sequence deduced from the nucleotide sequence reveals the primary structure of the MCAF precursor to be composed of a putative signal peptide sequence of 23 amino acid residues and a mature MCAF sequence of 76 amino acid residues. MCP-1 plays a unique and crucial role in the initiation of atherosclerosis and may provide a new therapeutic target in this disorder. Human

MCP-1 is a 8.7KDa non-glycoprotein, consisting of 99 amino acids in precursor form and 76 amino acids in mature form.

Application Notes

Optimal dilution of the CCL2 antibody should be determined by the researcher.

Immunogen

Amino acids Q24-R96 from the rat protein were used as the immunogen for the CCL2 antibody.

Storage

After reconstitution, the CCL2 antibody can be stored for up to one month at 4oC. For long-term, aliquot and store at -20oC. Avoid repeated freezing and thawing.