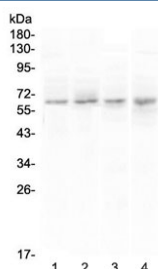


CCKBR Antibody (RQ4324)

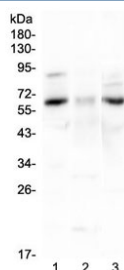
Catalog No.	Formulation	Size
RQ4324	0.5mg/ml if reconstituted with 0.2ml sterile DI water	100 ug

Bulk quote request

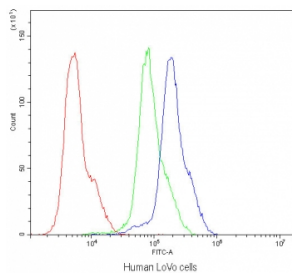
Availability	1-3 business days
Species Reactivity	Human, Mouse, Rat
Format	Antigen affinity purified
Host	Rabbit
Clonality	Polyclonal (rabbit origin)
Isotype	Rabbit IgG
Purity	Antigen affinity purified
Buffer	Lyophilized from 1X PBS with 2% Trehalose and 0.025% sodium azide
UniProt	P32239
Localization	Cell membrane
Applications	Western Blot : 0.5-1ug/ml Flow Cytometry : 1-3ug/10 ⁶ cells
Limitations	This CCKBR antibody is available for research use only.



Western blot testing of human 1) PANC-1, 2) U-87 MG, 3) COLO-320 and 4) SGC-7901 cell lysate with CCKBR antibody at 0.5ug/ml. Predicted molecular weight ~48 kDa, but can be observed at 68-97 kDa.



Western blot testing of 1) rat brain, 2) rat stomach and 3) mouse brain lysate with CCKBR antibody at 0.5ug/ml. Predicted molecular weight ~48 kDa, but can be observed at 68-97 kDa.



Flow cytometry testing of human LoVo cells with CCKBR antibody at 1ug/10⁶ cells (blocked with goat sera); Red=cells alone, Green=isotype control, Blue=CCKBR antibody.

Description

The cholecystokinin B receptor, also known as CCKBR or CCK2, is a protein that in humans is encoded by the CCKBR gene. This gene encodes a G-protein coupled receptor for gastrin and cholecystokinin (CCK), regulatory peptides of the brain and gastrointestinal tract. This protein is a type B gastrin receptor, which has a high affinity for both sulfated and nonsulfated CCK analogs and is found principally in the central nervous system and the gastrointestinal tract. Alternative splicing results in multiple transcript variants. A misspliced transcript variant including an intron has been observed in cells from colorectal and pancreatic tumors.

Application Notes

Optimal dilution of the CCKBR antibody should be determined by the researcher.

Immunogen

Amino acids PVYTVVQPVGPRVLQCVHRWPSARVRQTWS were used as the immunogen for the CCKBR antibody.

Storage

After reconstitution, the CCKBR antibody can be stored for up to one month at 4oC. For long-term, aliquot and store at -20oC. Avoid repeated freezing and thawing.