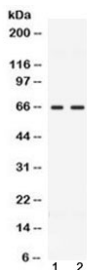


## CCDC6 Antibody (R32518)

Catalog No.	Formulation	Size
R32518	0.5mg/ml if reconstituted with 0.2ml sterile DI water	100 ug

[Bulk quote request](#)

<b>Availability</b>	1-3 business days
<b>Species Reactivity</b>	Human, Rat
<b>Format</b>	Antigen affinity purified
<b>Host</b>	Rabbit
<b>Clonality</b>	Polyclonal (rabbit origin)
<b>Isotype</b>	Rabbit IgG
<b>Purity</b>	Antigen affinity
<b>Buffer</b>	Lyophilized from 1X PBS with 2.5% BSA and 0.025% sodium azide
<b>UniProt</b>	Q16204
<b>Localization</b>	Cytoplasmic
<b>Applications</b>	Western Blot : 0.5-1ug/ml
<b>Limitations</b>	This CCDC6 antibody is available for research use only.



Western blot testing of 1) rat testis and 2) human MCF7 lysate with CCDC6 antibody at 0.5ug/ml. Predicted molecular weight ~53 kDa, routinely observed at ~65 kDa.

## Description

Coiled-coil domain-containing protein 6 is a protein that in humans is encoded by the CCDC6 gene. This gene encodes a coiled-coil domain-containing protein. The encoded protein is ubiquitously expressed and may function as a tumor suppressor. A chromosomal rearrangement resulting in the expression of a fusion gene containing a portion of this gene and the intracellular kinase-encoding domain of the ret proto-oncogene is the cause of thyroid papillary carcinoma.

## Application Notes

Differences in protocols and secondary/substrate sensitivity may require the CCDC6 antibody to be titrated for optimal performance.

## Immunogen

Amino acids 156-198 (KAELEQHLEQEQEFQVNKLMKKIKKLENDTISKQLTLEQLRRE) from the human protein were used as the immunogen for the CCDC6 antibody.

## Storage

After reconstitution, the CCDC6 antibody can be stored for up to one month at 4oC. For long-term, aliquot and store at -20oC. Avoid repeated freezing and thawing.