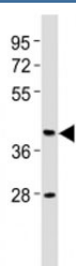


CB2 Antibody (F53156)

Catalog No.	Formulation	Size
F53156-0.4ML	In 1X PBS, pH 7.4, with 0.09% sodium azide	0.4 ml
F53156-0.08ML	In 1X PBS, pH 7.4, with 0.09% sodium azide	0.08 ml

[Bulk quote request](#)

Availability	1-3 business days
Species Reactivity	Human
Format	Antigen affinity purified
Clonality	Polyclonal (rabbit origin)
Isotype	Rabbit Ig
Purity	Antigen affinity
UniProt	P34972
Applications	Western Blot : 1:2000
Limitations	This CB2 antibody is available for research use only.



Western blot testing of CB2 antibody at 1:2000 dilution + human brain lysate. Predicted molecular weight ~38 kDa.

Description

Cannabinoid receptor 2 is a heterotrimeric G protein-coupled receptor for endocannabinoid 2-arachidonoylglycerol mediating inhibition of adenylate cyclase. May function in inflammatory response, nociceptive transmission and bone homeostasis.

Application Notes

Titration of the CB2 antibody may be required due to differences in protocols and secondary/substrate sensitivity.

Immunogen

This CB2 antibody was produced from a rabbit immunized with a KLH conjugated synthetic peptide between 18-53 amino acids from the N-terminal region of human Cannabinoid receptor 2.

Storage

Aliquot the CB2 antibody and store frozen at -20oC or colder. Avoid repeated freeze-thaw cycles.