

CB1 Antibody (RQ4287)

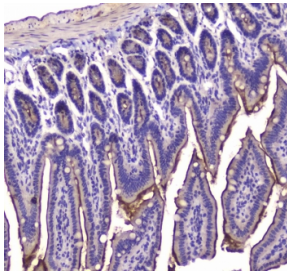
| Catalog No. | Formulation | Size |
|-------------|---|--------|
| RQ4287 | 0.5mg/ml if reconstituted with 0.2ml sterile DI water | 100 ug |

Bulk quote request

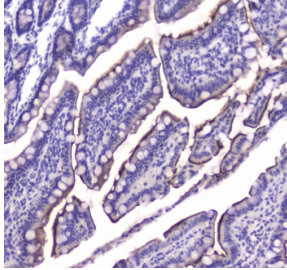
| | |
|---------------------------|---|
| Availability | 1-3 business days |
| Species Reactivity | Human, Mouse, Rat |
| Format | Antigen affinity purified |
| Host | Rabbit |
| Clonality | Polyclonal (rabbit origin) |
| Isotype | Rabbit IgG |
| Purity | Antigen affinity purified |
| Buffer | Lyophilized from 1X PBS with 2% Trehalose and 0.025% sodium azide |
| UniProt | P21554 |
| Localization | Cell membrane |
| Applications | Western Blot : 0.5-1ug/ml Immunohistochemistry (FFPE) : 01-2ug/ml Flow Cytometry : 1-3ug/10 ⁶ cells Direct ELISA : 0.1-0.5ug/ml |
| Limitations | This CB1 antibody is available for research use only. |

kDa
180-
130-
95-
72-
55-
43-
34-
26-
17-

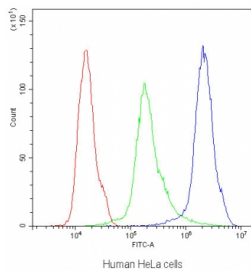
Western blot testing of human 22RV1 cell lysate with CB1 antibody at 0.5ug/ml.
Predicted molecular weight ~54 kDa.



IHC testing of FFPE mouse small intestine tissue with CB1 antibody at 1ug/ml. Required HIER: steam section in pH6 citrate buffer for 20 min and allow to cool prior to staining.



IHC testing of FFPE rat small intestine tissue with CB1 antibody at 1ug/ml. Required HIER: steam section in pH6 citrate buffer for 20 min and allow to cool prior to staining.



Flow cytometry testing of human HeLa cells with CB1 antibody at 1ug/10⁶ cells (blocked with goat sera); Red=cells alone, Green=isotype control, Blue=CB1 antibody.

Description

The cannabinoid receptor type 1, often abbreviated as CB1, is a G protein-coupled cannabinoid receptor located primarily in the central and peripheral nervous system. This gene encodes one of two cannabinoid receptors. The cannabinoids, principally delta-9-tetrahydrocannabinol and synthetic analogs, are psychoactive ingredients of marijuana. The cannabinoid receptors are members of the guanine-nucleotide-binding protein (G-protein) coupled receptor family, which inhibit adenylate cyclase activity in a dose-dependent, stereoselective and pertussis toxin-sensitive manner. The two receptors have been found to be involved in the cannabinoid-induced CNS effects (including alterations in mood and cognition) experienced by users of marijuana. Multiple transcript variants encoding two different protein isoforms have been described for this gene.

Application Notes

Optimal dilution of the CB1 antibody should be determined by the researcher.

Immunogen

A recombinant human protein corresponding to amino acids M1-Q75 was used as the immunogen for the CB1 antibody.

Storage

After reconstitution, the CB1 antibody can be stored for up to one month at 4°C. For long-term, aliquot and store at -20°C. Avoid repeated freezing and thawing.

