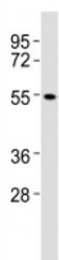


## CB1 Antibody (F53296)

Catalog No.	Formulation	Size
F53296-0.4ML	In 1X PBS, pH 7.4, with 0.09% sodium azide	0.4 ml
F53296-0.08ML	In 1X PBS, pH 7.4, with 0.09% sodium azide	0.08 ml

[Bulk quote request](#)

<b>Availability</b>	1-3 business days
<b>Species Reactivity</b>	Human
<b>Format</b>	Antigen affinity purified
<b>Clonality</b>	Polyclonal (rabbit origin)
<b>Isotype</b>	Rabbit Ig
<b>Purity</b>	Antigen affinity
<b>UniProt</b>	P21554
<b>Applications</b>	Western Blot : 1:2000
<b>Limitations</b>	This CB1 antibody is available for research use only.



Western blot testing of CB1 antibody at 1:2000 dilution + A431 lysate; Predicted molecular weight ~54 kDa.

## Description

Involved in cannabinoid-induced CNS effects. Acts by inhibiting adenylate cyclase. Could be a receptor for anandamide. Inhibits L-type Ca(2+) channel current. Isoform 2 and isoform 3 have altered ligand binding.

## Application Notes

Titration of the CB1 antibody may be required due to differences in protocols and secondary/substrate sensitivity.

## Immunogen

This CB1 antibody was produced from a rabbit immunized with a KLH conjugated synthetic peptide between 433-468

amino acids from the C-terminal region of human Cannabinoid receptor 1.

## **Storage**

Aliquot the CB1 antibody and store frozen at -20oC or colder. Avoid repeated freeze-thaw cycles.