

CAV2 Antibody / Caveolin-2 (F54989)

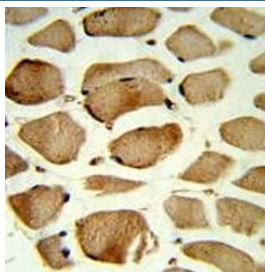
Catalog No.	Formulation	Size
F54989-0.4ML	In 1X PBS, pH 7.4, with 0.09% sodium azide	0.4 ml
F54989-0.08ML	In 1X PBS, pH 7.4, with 0.09% sodium azide	0.08 ml

[Bulk quote request](#)

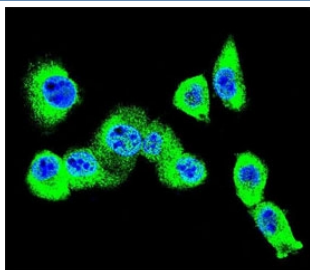
Availability	1-3 business days
Species Reactivity	Human
Format	Purified
Clonality	Polyclonal (rabbit origin)
Isotype	Rabbit Ig
Purity	Purified
UniProt	P51636
Localization	Cytoplasmic, nuclear
Applications	Western Blot : 1:500-1:1000 Immunofluorescence : 1:10-1:50 Flow Cytometry : 1:10-1:50 (1x10e6 cells) Immunohistochemistry (FFPE) : 1:50-1:100
Limitations	This CAV2 antibody is available for research use only.



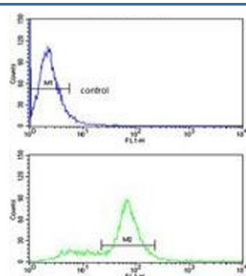
Western blot testing of human HUVEC lysate with CAV2 antibody. Predicted molecular weight ~18 kDa.



IHC testing of FFPE human skeletal muscle tissue with CAV2 antibody. HIER: steam section in pH6 citrate buffer for 20 min and allow to cool prior to staining.



Immunofluorescent staining of human MDA-MB-231 cells with CAV2 antibody (green) and DAPI nuclear stain (blue).



Flow cytometry testing of human MDA-MB-231 cells with CAV2 antibody; Blue=isotype control, Green= CAV2 antibody.

Description

CAV2 is a major component of the inner surface of caveolae, small invaginations of the plasma membrane, and is involved in essential cellular functions, including signal transduction, lipid metabolism, cellular growth control and apoptosis. This protein may function as a tumor suppressor.

Application Notes

The stated application concentrations are suggested starting points. Titration of the CAV2 antibody may be required due to differences in protocols and secondary/substrate sensitivity.

Immunogen

A portion of amino acids 11-44 from the human protein was used as the immunogen for the CAV2 antibody.

Storage

Aliquot the CAV2 antibody and store frozen at -20oC or colder. Avoid repeated freeze-thaw cycles.

