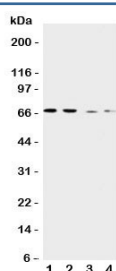


## CAT1 Antibody (R31369)

Catalog No.	Formulation	Size
R31369	0.5mg/ml if reconstituted with 0.2ml sterile DI water	100 ug

[Bulk quote request](#)

Availability	1-3 business days
Species Reactivity	Human
Format	Antigen affinity purified
Host	Rabbit
Clonality	Polyclonal (rabbit origin)
Isotype	Rabbit IgG
Purity	Antigen affinity
Buffer	Lyophilized from 1X PBS with 2% Trehalose
UniProt	P30825
Applications	Western Blot : 0.5-1ug/ml
Limitations	This CAT1 antibody is available for research use only.



Western blot testing of CAT1 antibody and Lane 1: human placenta; 2: HeLa; 3: SKOV-3; 4: HT1080 cell lysate. Expected molecular weight ~68 kDa.

## Description

High affinity cationic amino acid transporter 1 (CAT1), also called Solute carrier family 7 member 1 (SLC7A1) or ATRC1, is a protein that in humans is encoded by the SLC7A1 gene. This gene is mapped to 13q12.3. It acts as a cationic amino acid transporter and as an ecotropic retrovirus receptor and plays a role in the Na<sup>+</sup>-independent y<sup>+</sup> cationic amino acid transport system. CAT1 is a high-affinity, low capacity permease involved in the transport of the cationic amino acids (arginine, lysine and ornithine) in non-hepatic tissues.

## Application Notes

The stated application concentrations are suggested starting amounts. Titration of the CAT1 antibody may be required due to differences in protocols and secondary/substrate sensitivity.

## Immunogen

An amino acid sequence from the C-terminus of human Cationic amino acid transporter 1 (LDADQARTPDGNLDQCK) was used as the immunogen for this CAT1 antibody.

## Storage

After reconstitution, the CAT1 antibody can be stored for up to one month at 4°C. For long-term, aliquot and store at -20°C. Avoid repeated freezing and thawing.