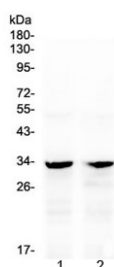


Caspase-6 Antibody (R32928)

Catalog No.	Formulation	Size
R32928	0.5mg/ml if reconstituted with 0.2ml sterile DI water	100 ug

Bulk quote request

Availability	1-3 business days
Species Reactivity	Mouse, Rat
Predicted Reactivity	Human
Format	Antigen affinity purified
Host	Rabbit
Clonality	Polyclonal (rabbit origin)
Isotype	Rabbit IgG
Purity	Antigen affinity
Buffer	Lyophilized from 1X PBS with 2% Trehalose
UniProt	P55212
Localization	Cytoplasmic
Applications	Western Blot : 0.5-1ug/ml
Limitations	This Caspase-6 antibody is available for research use only.



Western blot testing of 1) rat kidney and 2) mouse kidney with Caspase-6 antibody at 0.5ug/ml. Predicted molecular weight ~33 kDa (precursor).

Description

Caspase 6 is an enzyme that in humans is encoded by the CASP6 gene. This gene encodes a protein that is a member of the cysteine-aspartic acid protease (caspase) family. Using radiation hybrid mapping, the CASP6 gene is localized to human chromosome 4q25-q26. It functions as a downstream enzyme in the caspase activation cascade. And CASP6 can

cleave lamin A to its signature apoptotic fragment.

Application Notes

Optimal dilution of the Caspase-6 antibody should be determined by the researcher.

Immunogen

A recombinant human protein corresponding to amino acids A194-N293 was used as the immunogen for the Caspase-6 antibody.

Storage

After reconstitution, the Caspase-6 antibody can be stored for up to one month at 4oC. For long-term, aliquot and store at -20oC. Avoid repeated freezing and thawing.