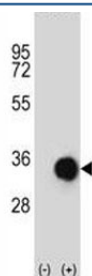


## Caspase-6 Antibody (F43295)

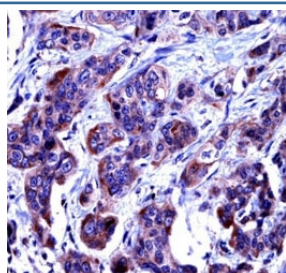
Catalog No.	Formulation	Size
F43295-0.4ML	In 1X PBS, pH 7.4, with 0.09% sodium azide	0.4 ml
F43295-0.08ML	In 1X PBS, pH 7.4, with 0.09% sodium azide	0.08 ml

[Bulk quote request](#)

<b>Availability</b>	1-3 business days
<b>Species Reactivity</b>	Human
<b>Format</b>	Antigen affinity purified
<b>Host</b>	Rabbit
<b>Clonality</b>	Polyclonal (rabbit origin)
<b>Isotype</b>	Rabbit Ig
<b>Purity</b>	Antigen affinity
<b>UniProt</b>	P55212
<b>Applications</b>	Western Blot : 1:1000 IHC (Paraffin) : 1:10-1:50
<b>Limitations</b>	This Caspase-6 antibody is available for research use only.



Western blot analysis of Caspase-6 antibody and 293 cell lysate (2 ug/lane) either nontransfected (Lane 1) or transiently transfected (2) with the CASP6 gene. Predicted molecular weight: ~33 kDa (precursor).



Caspase-6 antibody immunohistochemistry analysis in formalin fixed and paraffin embedded human bladder carcinoma.

## Description

This gene encodes a protein which is a member of the cysteine-aspartic acid protease (caspase) family. Sequential activation of caspases plays a central role in the execution-phase of cell apoptosis. Caspases exist as inactive proenzymes which undergo proteolytic processing at conserved aspartic residues to produce two subunits, large and small, that dimerize to form the active enzyme. This protein is processed by caspases 7, 8 and 10, and is thought to function as a downstream enzyme in the caspase activation cascade. Alternative splicing of this gene results in two transcript variants that encode different isoforms. [provided by RefSeq].

## Application Notes

Titration of the Caspase-6 antibody may be required due to differences in protocols and secondary/substrate sensitivity.

## Immunogen

A portion of amino acids 17-45 from the human protein was used as the immunogen for this Caspase-6 antibody.

## Storage

Aliquot the Caspase-6 antibody and store frozen at -20oC or colder. Avoid repeated freeze-thaw cycles.