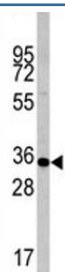


## Caspase-6 Antibody (F42752)

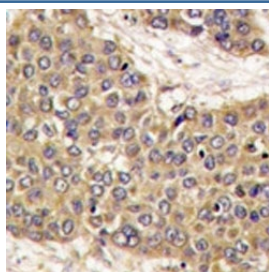
Catalog No.	Formulation	Size
F42752-0.4ML	In 1X PBS, pH 7.4, with 0.09% sodium azide	0.4 ml
F42752-0.08ML	In 1X PBS, pH 7.4, with 0.09% sodium azide	0.08 ml

[Bulk quote request](#)

<b>Availability</b>	1-3 business days
<b>Species Reactivity</b>	Human, Mouse
<b>Predicted Reactivity</b>	Bovine, Rat
<b>Format</b>	Antigen affinity purified
<b>Host</b>	Rabbit
<b>Clonality</b>	Polyclonal (rabbit origin)
<b>Isotype</b>	Rabbit Ig
<b>Purity</b>	Antigen affinity
<b>UniProt</b>	P55212
<b>Applications</b>	Western Blot : 1:1000 IHC (Paraffin) : 1:10-1:50
<b>Limitations</b>	This Caspase-6 antibody is available for research use only.



Western blot analysis of Caspase-6 antibody and mouse liver tissue lysate. Predicted molecular weight: ~33 kDa (precursor).



IHC analysis of FFPE human hepatocarcinoma tissue stained with Caspase-6 antibody

## Description

CASP6 is a member of the cysteine-aspartic acid protease (caspase) family. Sequential activation of caspases plays a central role in the execution-phase of cell apoptosis. Caspases exist as inactive proenzymes which undergo proteolytic processing at conserved aspartic residues to produce 2 subunits, large and small, that dimerize to form the active enzyme. This protein could be processed by caspases 7, 8 and 10, and is thought to function as a downstream enzyme in the caspase activation cascade.

## Application Notes

Titration of the Caspase-6 antibody may be required due to differences in protocols and secondary/substrate sensitivity.

## Immunogen

A portion of amino acids 235-263 from the human protein was used as the immunogen for this Caspase-6 antibody.

## Storage

Aliquot the Caspase-6 antibody and store frozen at -20oC or colder. Avoid repeated freeze-thaw cycles.