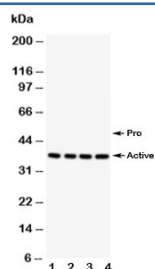


Caspase-12 Antibody (R31215)

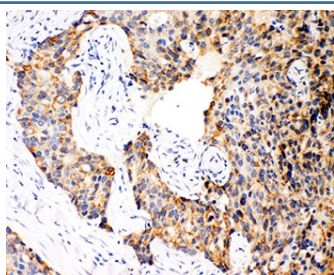
Catalog No.	Formulation	Size
R31215	0.5mg/ml if reconstituted with 0.2ml sterile DI water	100 ug

Bulk quote request

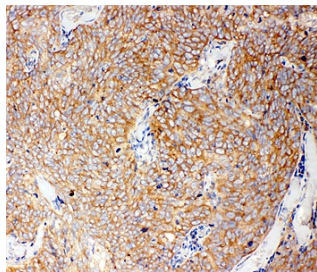
Availability	1-3 business days
Species Reactivity	Human
Format	Antigen affinity purified
Host	Rabbit
Clonality	Polyclonal (rabbit origin)
Isotype	Rabbit IgG
Purity	Antigen affinity
Buffer	Lyophilized from 1X PBS with 2.5% BSA and 0.025% sodium azide/thimerosal
UniProt	Q6UXS9
Applications	Western Blot : 0.5-1ug/ml IHC (FFPE) : 0.5-1ug/ml
Limitations	This Caspase-12 antibody is available for research use only.



Western blot testing of Caspase-12 antibody; Lane 1: PANC; 2: SMMC-7721; 3: A549; 4: HeLa. Predicted molecular weight ~50/36~42kDa (pro/active).



IHC-P: Caspase-12 antibody testing of human breast cancer tissue



IHC-P: Caspase-12 antibody testing of human lung cancer tissue

Description

Caspase-12 is an enzyme known as a cysteine protease. It belongs to a family of enzymes called caspases that cleave their substrates at C-terminal aspartic acid residues. The CASP12 gene was mapped to chromosome 11q22.3. Caspase-12 attenuates the inflammatory and innate immune response to endotoxins and in doing so may constitute a risk factor for developing sepsis. The estrogen-mediated inhibition of its expression is a built-in mechanism that has evolved to protect females from infection by favoring a more robust inflammatory response to pathogens, perhaps notably in childbirth.

Application Notes

The stated application concentrations are suggested starting points. Titration of the Caspase-12 antibody may be required due to differences in protocols and secondary/substrate sensitivity.

Immunogen

Amino acids 71-84 (KIFREHLWNSKKQL-human) were used as the immunogen for this Caspase-12 antibody.

Storage

After reconstitution, the Caspase-12 antibody can be stored for up to one month at 4°C. For long-term, aliquot and store at -20°C. Avoid repeated freezing and thawing.