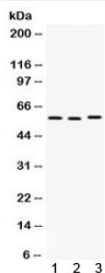


CAP1 Antibody (R32375)

Catalog No.	Formulation	Size
R32375	0.5mg/ml if reconstituted with 0.2ml sterile DI water	100 ug

[Bulk quote request](#)

Availability	1-3 business days
Species Reactivity	Human, Mouse, Rat
Format	Antigen affinity purified
Host	Rabbit
Clonality	Polyclonal (rabbit origin)
Isotype	Rabbit IgG
Purity	Antigen affinity
Buffer	Lyophilized from 1X PBS with 2.5% BSA and 0.025% sodium azide
UniProt	Q01518
Applications	Western Blot : 0.1-0.5ug/ml
Limitations	This CAP1 antibody is available for research use only.



Western blot testing of 1) rat thymus, 2) rat spleen, and 3) human SMMC-7721 lysate with CAP1 antibody. Predicted molecular weight ~52 kDa, but routinely observed at 55-60 kDa.

Description

Adenylyl cyclase-associated protein 1 is an enzyme that in humans is encoded by the CAP1 gene. This gene is mapped to 1p34.2. The protein encoded by this gene is related to the *S. cerevisiae* CAP protein, which is involved in the cyclic AMP pathway. And the human protein is able to interact with other molecules of the same protein, as well as with CAP2 and actin. Alternatively spliced transcript variants have been identified.

Application Notes

Optimal dilution of the CAP1 antibody should be determined by the researcher.

Immunogen

Amino acids A2-R123 of the human protein were used as the immunogen for the CAP1 antibody.

Storage

After reconstitution, the CAP1 antibody can be stored for up to one month at 4oC. For long-term, aliquot and store at -20oC. Avoid repeated freezing and thawing.