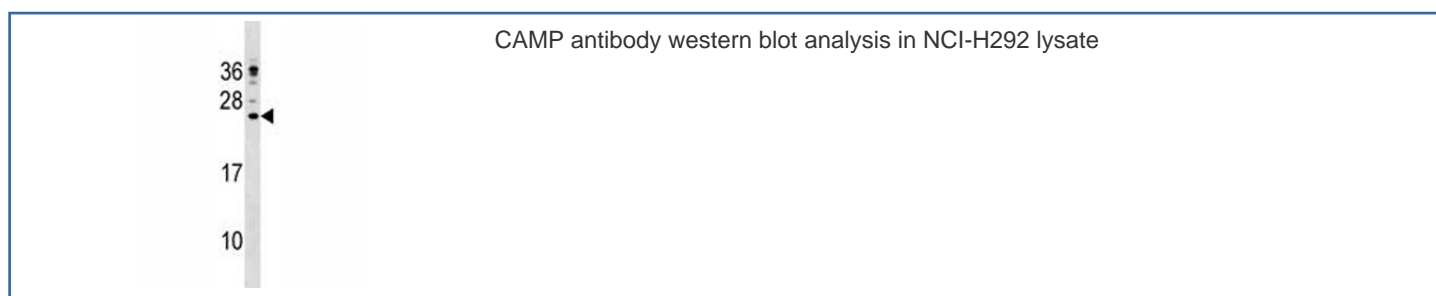


CAMP Antibody (F45218)

Catalog No.	Formulation	Size
F45218-0.4ML	In 1X PBS, pH 7.4, with 0.09% sodium azide	0.4 ml
F45218-0.08ML	In 1X PBS, pH 7.4, with 0.09% sodium azide	0.08 ml

[Bulk quote request](#)

Availability	1-3 business days
Species Reactivity	Human
Format	Antigen affinity purified
Host	Rabbit
Clonality	Polyclonal (rabbit origin)
Isotype	Rabbit Ig
Purity	Antigen affinity
UniProt	P49913
Applications	Western Blot : 1:1000
Limitations	This CAMP antibody is available for research use only.



Description

Cathelicidin antimicrobial protein is an antimicrobial protein found in specific granules of polymorphonuclear leukocytes (PMNs).

Application Notes

Titration of the CAMP antibody may be required due to differences in protocols and secondary/substrate sensitivity.

Immunogen

A portion of amino acids 123-152 from the human protein was used as the immunogen for this CAMP antibody.

Storage

Aliquot the CAMP antibody and store frozen at -20oC or colder. Avoid repeated freeze-thaw cycles.