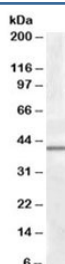


CAMK1D Antibody (R33177)

Catalog No.	Formulation	Size
R33177-100UG	0.5 mg/ml in 1X TBS, pH7.3, with 0.5% BSA (US sourced) and 0.02% sodium azide	100 ug

[Bulk quote request](#)

Availability	1-3 business days
Species Reactivity	Human
Format	Antigen affinity purified
Clonality	Polyclonal (goat origin)
Isotype	Goat Ig
Purity	Antigen affinity
Gene ID	57118
Applications	Western Blot : 1-3ug/ml ELISA (peptide) LOD : 1:4000
Limitations	This CAMK1D antibody is available for research use only.



Western blot testing of human liver lysate with CAMK1D antibody at 0.5ug/ml. Predicted molecular weight: ~40kDa.

Description

Additional name(s) for this target protein: Calcium/calmodulin-dependent protein kinase 1 delta

Application Notes

Optimal dilution of the CAMK1D antibody should be determined by the researcher.

Immunogen

Amino acids ASQKDCAYVAKPES were used as the immunogen for this CAMK1D antibody.

Storage

Aliquot and store the CAMK1D antibody at -20oC.