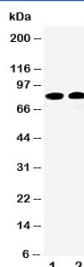


Calpain 1 Antibody (R30432)

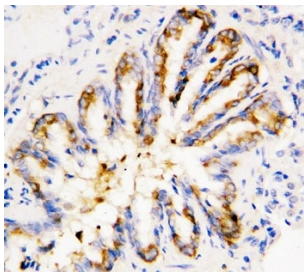
Catalog No.	Formulation	Size
R30432	0.5mg/ml if reconstituted with 0.2ml sterile DI water	100 ug

[Bulk quote request](#)

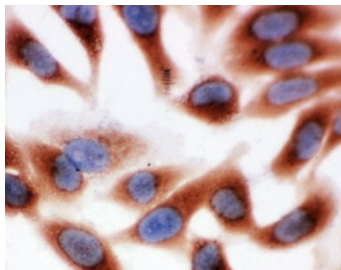
Availability	1-3 business days
Species Reactivity	Human, Mouse, Rat
Format	Antigen affinity purified
Host	Rabbit
Clonality	Polyclonal (rabbit origin)
Isotype	Rabbit IgG
Purity	Antigen affinity
Buffer	Lyophilized from 1X PBS with 2.5% BSA and 0.025% sodium azide/thimerosal
UniProt	P07384
Applications	Western Blot : 0.5-1ug/ml IHC (FFPE) : 0.5-1ug/ml IHC (Frozen) : 0.5-1ug/ml Immunocytochemistry : 0.5-1ug/ml
Limitations	This Calpain 1 antibody is available for research use only.



Western blot testing of Calpain 1 antibody and Lane 1: HT1080; 2: COLO320 cell lysate.
Predicted molecular weight: ~82kDa.



IHC-P: Calpain 1 antibody testing of rat lung tissue



ICC testing of HeLa cells

Description

Calpain-1 catalytic subunit is a protein that in humans is encoded by the CAPN1 gene. Calpain is an intracellular protease that requires calcium for its catalytic activity. Two isozymes, CAPN1 (mu-calpain) and CAPN2 (m-calpain), with different calcium requirements, have been identified. Both are heterodimers composed of L (large, catalytic, 82 kD) and S (small, regulatory, 30 kD) subunits. The isozymes share an identical S subunit, with the differences arising from the L subunits. By quantitative RT-PCR, Ueyama et al.(1998) found that expression of Calpain1/2 mRNA was significantly increased in muscle biopsy samples derived from 5 men with progressive muscular dystrophy (e.g., DMD; 310200) and 2 men and 3 women with amyotrophic lateral sclerosis(ALS; 105400) compared with controls. Using cDNA clones as probes, Ohno et al.(1989, 1990) assign CAPNL1 to chromosome 11.

Application Notes

The stated application concentrations are suggested starting amounts. Titration of the Calpain 1 antibody may be required due to differences in protocols and secondary/substrate sensitivity.

Immunogen

An amino acid sequence from the middle region of human CAPNL1 (EWNNVDPYERDQLRV) was used as the immunogen for this Calpain 1 antibody.

Storage

After reconstitution, the Calpain 1 antibody can be stored for up to one month at 4°C. For long-term, aliquot and store at -20°C. Avoid repeated freezing and thawing.