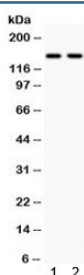


Calcium Sensing Receptor Antibody / CASR (R32416)

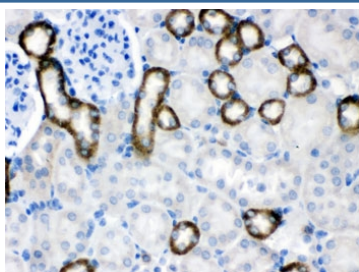
Catalog No.	Formulation	Size
R32416	0.5mg/ml if reconstituted with 0.2ml sterile DI water	100 ug

Bulk quote request

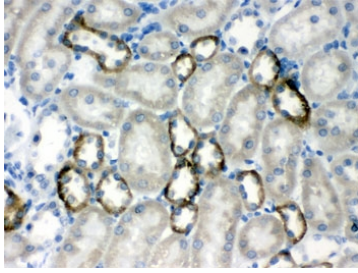
Availability	1-3 business days
Species Reactivity	Human, Mouse, Rat
Format	Antigen affinity purified
Host	Rabbit
Clonality	Polyclonal (rabbit origin)
Isotype	Rabbit IgG
Purity	Antigen affinity
Buffer	Lyophilized from 1X PBS with 2.5% BSA and 0.025% sodium azide
UniProt	P41180
Localization	Cytoplasmic, membranous
Applications	Western Blot : 0.1-0.5ug/ml IHC (FFPE) : 0.5-1ug/ml
Limitations	This Calcium Sensing Receptor antibody is available for research use only.



Western blot testing of human 1) HeLa and 2) 22RV1 cell lysate with Calcium Sensing Receptor antibody. Predicted molecular weight ~121 kDa, but is routinely observed at up to ~160 kDa.



IHC testing of FFPE mouse kidney with Calcium Sensing Receptor antibody. HIER: Boil the paraffin sections in pH 6, 10mM citrate buffer for 20 minutes and allow to cool prior to testing.



IHC testing of FFPE rat kidney with Calcium Sensing Receptor antibody. HIER: Boil the paraffin sections in pH 6, 10mM citrate buffer for 20 minutes and allow to cool prior to testing.

Description

The calcium-sensing receptor (CaSR) is a G protein-coupled receptor that is expressed in the parathyroid hormone (PTH)-producing chief cells of the parathyroid gland, and the cells lining the kidney tubule. It senses small changes in circulating calcium concentration and couples this information to intracellular signaling pathways that modify PTH secretion or renal cation handling, thus this protein plays an essential role in maintaining mineral ion homeostasis. Mutations in this gene cause familial hypocalciuric hypercalcemia, familial, isolated hypoparathyroidism, and neonatal severe primary hyperparathyroidism.

Application Notes

Optimal dilution of the Calcium Sensing Receptor antibody should be determined by the researcher.

Immunogen

Amino acids Q926-S1078 of the human protein were used as the immunogen for the Calcium Sensing Receptor antibody.

Storage

After reconstitution, the Calcium Sensing Receptor antibody can be stored for up to one month at 4°C. For long-term, aliquot and store at -20°C. Avoid repeated freezing and thawing.

References (1)