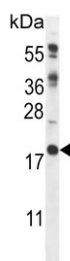


Calcipressin-2 Antibody / RCAN2 / DSCR1L1 (F54849)

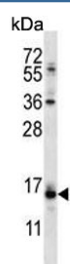
Catalog No.	Formulation	Size
F54849-0.4ML	In 1X PBS, pH 7.4, with 0.09% sodium azide	0.4 ml
F54849-0.08ML	In 1X PBS, pH 7.4, with 0.09% sodium azide	0.08 ml

[Bulk quote request](#)

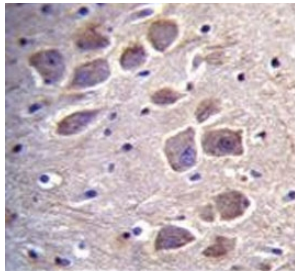
Availability	1-3 business days
Species Reactivity	Human, Mouse
Format	Purified
Clonality	Polyclonal (rabbit origin)
Isotype	Rabbit Ig
Purity	Antigen affinity purified
UniProt	Q14206
Localization	Cytoplasmic, nuclear
Applications	Flow Cytometry : 1:10-1:50 (1x10e6 cells) Immunohistochemistry (FFPE) : 1:10-1:50 Western Blot : 1:500-1:1000
Limitations	This Calcipressin-2 antibody is available for research use only.



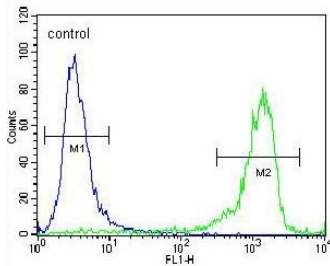
Western blot testing of mouse heart tissue lysate with Calcipressin-2 antibody. Predicted molecular weight ~22 kDa.



Western blot testing of NCI-H460 cell lysate with Calcipressin-2 antibody. Predicted molecular weight ~22 kDa.



IHC testing of FFPE human brain tissue with Calciopressin-2 antibody. HIER: steam section in pH6 citrate buffer for 20 min and allow to cool prior to staining.



Flow cytometry testing of human NCI-H460 cells with Calciopressin-2 antibody; Blue=isotype control, Green= Calciopressin-2 antibody.

Description

Calciopressin-2/DSCR1L1 inhibits calcineurin-dependent transcriptional responses by binding to the catalytic domain of calcineurin A. This protein may play a role during central nervous system development. Expression is detected in fibroblasts, heart, brain, liver, and skeletal muscle but not in placenta, lung, kidney and pancreas. Expression of both transcripts is upregulated by physiologic concentrations of the thyroid hormone triiodothyroxine.

Application Notes

The stated application concentrations are suggested starting points. Titration of the Calciopressin-2 antibody may be required due to differences in protocols and secondary/substrate sensitivity.

Immunogen

A portion of amino acids 6-37 from the human protein was used as the immunogen for the Calciopressin-2 antibody.

Storage

Aliquot the Calciopressin-2 antibody and store frozen at -20oC or colder. Avoid repeated freeze-thaw cycles.