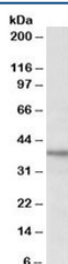


## C12orf29 Antibody (R35390)

Catalog No.	Formulation	Size
R35390-100UG	0.5 mg/ml in 1X TBS, pH7.3, with 0.5% BSA (US sourced) and 0.02% sodium azide	100 ug

[Bulk quote request](#)

Availability	1-3 business days
Species Reactivity	Human
Predicted Reactivity	Cow, Pig, Sheep
Format	Antigen affinity purified
Clonality	Polyclonal (goat origin)
Isotype	Goat Ig
Purity	Antigen affinity
Gene ID	91298
Applications	Western Blot : 1-3ug/ml ELISA (peptide) LOD : 1:4000
Limitations	This C12orf29 antibody is available for research use only.



Western blot testing of HeLa lysate with C12orf29 antibody at 1ug/ml.  
Predicted/observed molecular weight: ~38kDa.

## Description

Additional name(s) for this target protein: Chromosome 12 open reading frame 29, CL029

## Application Notes

Optimal dilution of the C12orf29 antibody should be determined by the researcher.

1. This C12orf29 antibody is specific for isoforms 1 and 3.

## Immunogen

Amino acids QPFKVLATETVSHK were used as the immunogen for this C12orf29 antibody.

## Storage

Aliquot and store the C12orf29 antibody at -20oC.