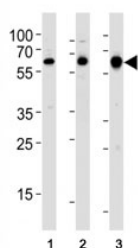


c-Src Antibody (F50715)

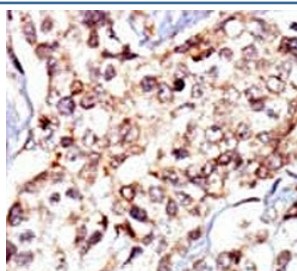
Catalog No.	Formulation	Size
F50715-0.4ML	In 1X PBS, pH 7.4, with 0.09% sodium azide	0.4 ml
F50715-0.08ML	In 1X PBS, pH 7.4, with 0.09% sodium azide	0.08 ml

[Bulk quote request](#)

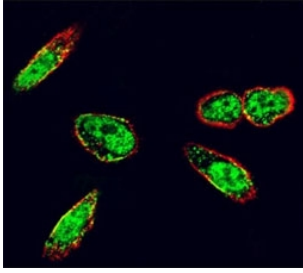
Availability	1-3 business days
Species Reactivity	Human, Mouse
Format	Purified
Host	Rabbit
Clonality	Polyclonal (rabbit origin)
Isotype	Rabbit Ig
Purity	Purified
UniProt	P12931
Applications	Western Blot : 1:1000 IHC (Paraffin) : 1:50-1:100 Immunofluorescence : 1:10-1:50
Limitations	This c-Src antibody is available for research use only.



Western blot analysis of lysate from (1) human MCF-7, (2) rat PC-12, and (3) mouse C2C12 cell line using c-Src antibody at 1:1000.



IHC analysis of FFPE human breast carcinoma tissue stained with the c-Src antibody



Confocal immunofluorescent analysis of c-Src antibody with A375 cells followed by Alexa Fluor 488-conjugated goat anti-rabbit IgG (green). Actin filaments have been labeled with Alexa Fluor 555 Phalloidin (red).

Description

The gene for Src is highly similar to the v-src gene of Rous sarcoma virus. This proto-oncogene may play a role in the regulation of embryonic development and cell growth. It is a tyrosine-protein kinase whose activity can be inhibited by phosphorylation by c-SRC kinase. Mutations in Src could be involved in the malignant progression of colon cancer.

Application Notes

Titration of the c-Src antibody may be required due to differences in protocols and secondary/substrate sensitivity.

Immunogen

A portion of amino acids 1-30 from the human protein was used as the immunogen for this c-Src antibody.

Storage

Aliquot the c-Src antibody and store frozen at -20oC or colder. Avoid repeated freeze-thaw cycles.