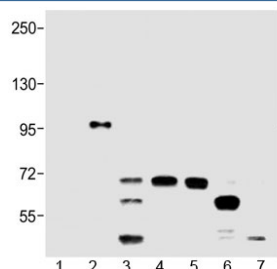


BRAF V600E Antibody (F54150)

Catalog No.	Formulation	Size
F54150-0.2ML	In 1X PBS, pH 7.4, with 0.09% sodium azide	0.2 ml
F54150-0.05ML	In 1X PBS, pH 7.4, with 0.09% sodium azide	0.05 ml

[Bulk quote request](#)

Availability	1-3 business days
Species Reactivity	Human
Predicted Reactivity	Bovine, Chicken, Mouse, Rat
Format	Antigen affinity purified
Host	Rabbit
Clonality	Polyclonal (rabbit origin)
Isotype	Rabbit Ig
Purity	Antigen affinity
UniProt	P15056
Applications	Western Blot : 1:1000-1:2000
Limitations	This BRAF V600E antibody is available for research use only.



Western blot testing of 1) BRAF-600V, 2) BRAF-V600E, 3) Raji, 4) HeLa, 5) A549, 6) T47D and 7) MDA-MB-453 lysate with BRAF V600E antibody at 1:2000. Predicted molecular weight ~85-95 kDa.

Description

Protein kinase involved in the transduction of mitogenic signals from the cell membrane to the nucleus. May play a role in the postsynaptic responses of hippocampal neuron. Phosphorylates MAP2K1, and thereby contributes to the MAP kinase signal transduction pathway.

Application Notes

The stated application concentrations are suggested starting points. Titration of the BRAF V600E antibody may be required due to differences in protocols and secondary/substrate sensitivity.

Immunogen

A portion of amino acids 576-606 from human BRAF was used as the immunogen for the BRAF V600E antibody.

Storage

Aliquot the BRAF V600E antibody and store frozen at -20oC or colder. Avoid repeated freeze-thaw cycles.