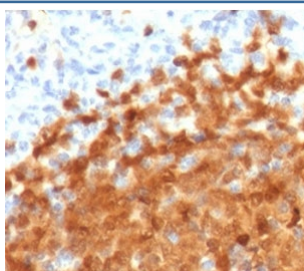


BOB1 Antibody [clone PD2AF1-1] (V3915)

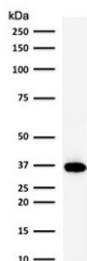
Catalog No.	Formulation	Size
V3915-100UG	0.2 mg/ml in 1X PBS with 0.1 mg/ml BSA (US sourced) and 0.05% sodium azide	100 ug
V3915-20UG	0.2 mg/ml in 1X PBS with 0.1 mg/ml BSA (US sourced) and 0.05% sodium azide	20 ug
V3915SAF-100UG	1 mg/ml in 1X PBS; BSA free, sodium azide free	100 ug

Bulk quote request

Availability	1-3 business days
Species Reactivity	Human
Format	Purified
Clonality	Monoclonal (mouse origin)
Isotype	Mouse IgG2b, kappa
Clone Name	PD2AF1-1
Purity	Protein G affinity
UniProt	Q16633
Localization	Nuclear
Applications	Western Blot : 1-2ug/ml Immunohistochemistry (FFPE) : 1-2ug/ml for 30 min at RT
Limitations	This BOB1 antibody is available for research use only.



IHC testing of FFPE human spleen with BOB-1 antibody (clone PD2AF1-1). HIER: boil tissue sections in pH 9 10mM Tris with 1mM EDTA for 10-20 min followed by cooling at RT for 20 min.



Western blot testing of human Raji cell lysate with BOB-1 antibody (clone PD2AF1-1).
Predicted molecular weight: ~28 kDa (unmodified), 35-40 kDa (ubiquitinated).

Description

Transcriptional coactivator that specifically associates with either OCT1 or OCT2. It boosts the OCT1 mediated promoter activity and to a lesser extent, that of OCT2. It has no intrinsic DNA-binding activity. It recognizes the POU domains of OCT1 and OCT2. It is essential for the response of B-cells to antigens and required for the formation of germinal centers. [UniProt]

Application Notes

The stated application concentrations are suggested starting points. Titration of the BOB1 antibody may be required due to differences in protocols and secondary/substrate sensitivity.

Immunogen

A portion of amino acids 148-255 from the human protein was used as the immunogen for the BOB1 antibody.

Storage

Store the BOB1 antibody at 2-8°C (with azide) or aliquot and store at -20°C or colder (without azide).