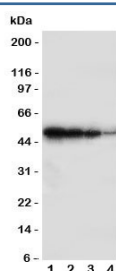


BMPR1B Antibody (R31125)

Catalog No.	Formulation	Size
R31125	0.5mg/ml if reconstituted with 0.2ml sterile DI water	100 ug

Bulk quote request

Availability	1-3 business days
Species Reactivity	Human, Mouse, Rat
Format	Antigen affinity purified
Host	Rabbit
Clonality	Polyclonal (rabbit origin)
Isotype	Rabbit IgG
Purity	Antigen affinity
Buffer	Lyophilized from 1X PBS with 2.5% BSA and 0.025% sodium azide/thimerosal
UniProt	O00238
Applications	Western Blot : 0.5-1ug/ml
Limitations	This BMPR1B antibody is available for research use only.



Western blot testing of BMPR1B antibody; Lane 1: Recombinant human protein 10ng; 2: 5ng; 3: 2.5ng; 4: 1.25ng

Description

Bone Morphogenetic Protein Receptor Type IB, also known as ALK6, is a protein which in humans is encoded by the BMPR1B gene. It is a member of the bone morphogenetic protein(BMP) receptor family of transmembrane serine/threonine kinases. The ligands of this receptor are BMPs, which are members of the TGF-beta superfamily. BMPs are involved in endochondral bone formation and embryogenesis. These proteins transduce their signals through the formation of heteromeric complexes of two different types of serine(threonine) kinase receptors: type I receptors of about 50-55 kD and type II receptors of about 70-80 kD. Type II receptors bind ligands in the absence of type I receptors, but they require their respective type I receptors for signaling, whereas type I receptors require their respective type II

receptors for ligand binding. By analysis of a monochromosome hybrid mapping panel and by FISH, Astrom et al.(1999) mapped the BMPR1B gene to chromosome 4q22-q24. Ide et al.(1997) compared BMP receptor expression in normal and cancerous prostate tissues. While BMPR1A and BMPR2 were expressed at similar levels in all prostate tissues, BMPR1B was expressed at a significantly reduced level in cancerous prostate tissue.

Application Notes

The stated application concentrations are suggested starting amounts. Titration of the BMPR1B antibody may be required due to differences in protocols and secondary/substrate sensitivity.

Immunogen

An amino acid sequence from the middle region of human Bone Morphogenetic Protein Receptor Type IB (FCYFRYKRQETRPRYS) was used as the immunogen for this BMPR1B antibody.

Storage

After reconstitution, the BMPR1B antibody can be stored for up to one month at 4oC. For long-term, aliquot and store at -20oC. Avoid repeated freezing and thawing.