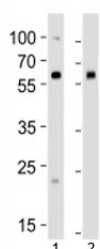


BMPR1A Antibody (F47723)

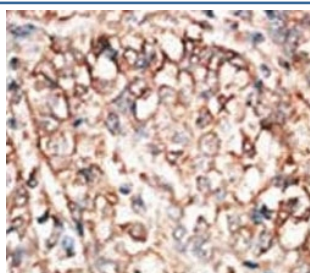
Catalog No.	Formulation	Size
F47723-0.4ML	In 1X PBS, pH 7.4, with 0.09% sodium azide	0.4 ml
F47723-0.08ML	In 1X PBS, pH 7.4, with 0.09% sodium azide	0.08 ml

[Bulk quote request](#)

Availability	1-3 business days
Species Reactivity	Human, Mouse
Format	Purified
Host	Rabbit
Clonality	Polyclonal (rabbit origin)
Isotype	Rabbit Ig
Purity	Purified
UniProt	P36894
Applications	Western Blot : 1:1000 IHC (Paraffin) : 1:50-1:100
Limitations	This BMPR1A antibody is available for research use only.



Western blot analysis of lysate from 1) human 293 and 2) mouse NIH3T3 cell line using BMPR1A antibody at 1:1000. Predicted molecular weight ~60 kDa.



IHC analysis of FFPE human hepatocarcinoma tissue stained with the BMPR1A antibody

Description

The bone morphogenetic protein (BMP) receptors are a family of transmembrane serine/threonine kinases that include the type I receptors BMPR1A and BMPR1B and the type II receptor BMPR2. These receptors are also closely related to the activin receptors, ACVR1 and ACVR2. The ligands of these receptors are members of the TGF-beta superfamily. TGF-betas and activins transduce their signals through the formation of heteromeric complexes with 2 different types of serine (threonine) kinase receptors: type I receptors of about 50-55 kD and type II receptors of about 70-80 kD. Type II receptors bind ligands in the absence of type I receptors, but they require their respective type I receptors for signaling, whereas type I receptors require their respective type II receptors for ligand binding.

Application Notes

Titration of the BMPR1A antibody may be required due to differences in protocols and secondary/substrate sensitivity.

Immunogen

A portion of amino acids 166-196 from the human protein was used as the immunogen for this BMPR1A antibody.

Storage

Aliquot the BMPR1A antibody and store frozen at -20oC or colder. Avoid repeated freeze-thaw cycles.