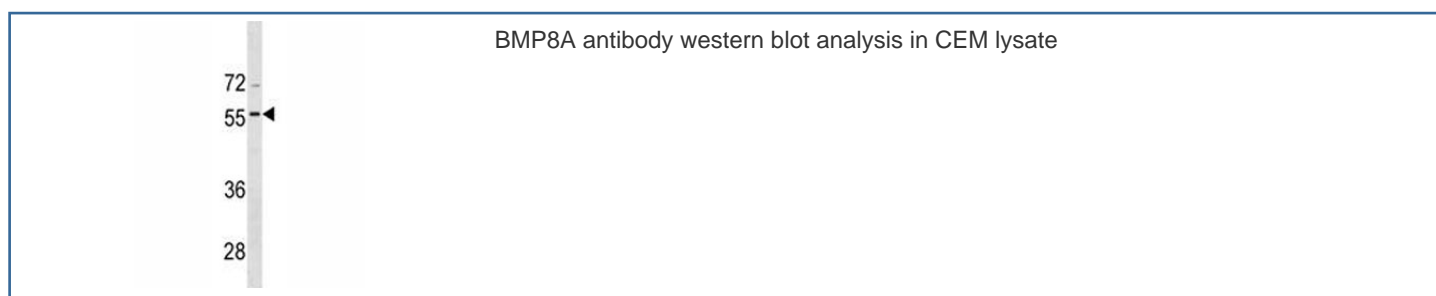


## BMP8A Antibody (F47545)

Catalog No.	Formulation	Size
F47545-0.4ML	In 1X PBS, pH 7.4, with 0.09% sodium azide	0.4 ml
F47545-0.08ML	In 1X PBS, pH 7.4, with 0.09% sodium azide	0.08 ml

[Bulk quote request](#)

<b>Availability</b>	1-3 business days
<b>Species Reactivity</b>	Human
<b>Format</b>	Antigen affinity purified
<b>Host</b>	Rabbit
<b>Clonality</b>	Polyclonal (rabbit origin)
<b>Isotype</b>	Rabbit Ig
<b>Purity</b>	Antigen affinity
<b>UniProt</b>	Q7Z5Y6
<b>Applications</b>	Western Blot : 1:1000
<b>Limitations</b>	This BMP8A antibody is available for research use only.



## Description

Induces cartilage and bone formation. May be the osteoinductive factor responsible for the phenomenon of epithelial osteogenesis. Plays a role in calcium regulation and bone homeostasis (By similarity). [UniProt]

## Application Notes

Titration of the BMP8A antibody may be required due to differences in protocols and secondary/substrate sensitivity.

## **Immunogen**

A portion of amino acids 271-298 from the human protein was used as the immunogen for this BMP8A antibody.

## **Storage**

Aliquot the BMP8A antibody and store frozen at -20oC or colder. Avoid repeated freeze-thaw cycles.