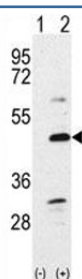


BMP7 Antibody (F45411)

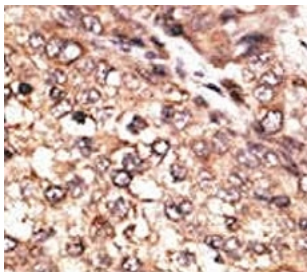
Catalog No.	Formulation	Size
F45411-0.4ML	In 1X PBS, pH 7.4, with 0.09% sodium azide	0.4 ml
F45411-0.08ML	In 1X PBS, pH 7.4, with 0.09% sodium azide	0.08 ml

[Bulk quote request](#)

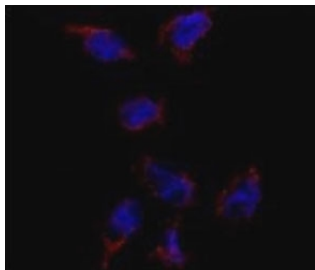
Availability	1-3 business days
Species Reactivity	Human
Predicted Reactivity	Mouse
Format	Purified
Host	Rabbit
Clonality	Polyclonal (rabbit origin)
Isotype	Rabbit Ig
Purity	Purified
UniProt	P18075
Applications	Western Blot : 1:1000 IHC (Paraffin) : 1:50-1:100 Immunofluorescence : 1:50-1:100
Limitations	This BMP7 antibody is available for research use only.



Western blot analysis of BMP7 antibody and 293 cell lysate either nontransfected (Lane 1) or transiently transfected with the BMP7 gene (2). Predicted molecular weight: 49 kDa protein cleaved into ~33 and ~15 kDa segments.



IHC analysis of FFPE human hepatocarcinoma tissue stained with the BMP7 antibody



Immunofluorescence analysis of BMP7 antibody and HeLa cells. Primary Ab was followed by Alexa-Fluor-546-conjugated donkey anti-rabbit IgG (H+L). Alexa-Fluor-546 emits orange fluorescence. Blue counterstaining is DAPI.

Description

BMP7 induces cartilage and bone formation. May be the osteoinductive factor responsible for the phenomenon of epithelial osteogenesis. Plays a role in calcium regulation and bone homeostasis. [UniProt]

Application Notes

The stated application concentrations are suggested starting amounts. Titration of the BMP7 antibody may be required due to differences in protocols and secondary/substrate sensitivity.

Immunogen

A portion of amino acids 15-44 from the human protein was used as the immunogen for this BMP7 antibody.

Storage

Store at 4°C for up to one month. For long term, aliquot the BMP7 antibody and store frozen at -20°C or colder. Avoid repeated freeze-thaw cycles.