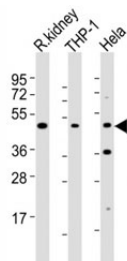


## BMP2 Antibody (F53444)

Catalog No.	Formulation	Size
F53444-0.4ML	In 1X PBS, pH 7.4, with 0.09% sodium azide	0.4 ml
F53444-0.08ML	In 1X PBS, pH 7.4, with 0.09% sodium azide	0.08 ml

[Bulk quote request](#)

<b>Availability</b>	1-3 business days
<b>Species Reactivity</b>	Human, Rat
<b>Format</b>	Antigen affinity purified
<b>Host</b>	Rabbit
<b>Clonality</b>	Polyclonal (rabbit origin)
<b>Isotype</b>	Rabbit Ig
<b>Purity</b>	Antigen affinity
<b>UniProt</b>	P12643
<b>Localization</b>	Cytoplasmic
<b>Applications</b>	Western Blot : 1:2000
<b>Limitations</b>	This BMP2 antibody is available for research use only.



Western blot testing of BMP2 antibody at 1:2000 dilution. Lane 1: rat kidney lysate; 2: THP-1 lysate; 3: HeLa lysate; Expected molecular weight: 13-14 kDa per monomer.

## Description

Induces cartilage and bone formation.

## Application Notes

The stated application concentrations are suggested starting amounts. Titration of the BMP2 antibody may be required due to differences in protocols and secondary/substrate sensitivity.

## Immunogen

This BMP2 antibody was produced from a rabbit immunized with a recombinant protein of human BMP2.

## Storage

Store at 4°C for up to one month. For long term, aliquot the BMP2 antibody and store frozen at -20°C or colder. Avoid repeated freeze-thaw cycles.