

BMP2 Antibody (F43310)

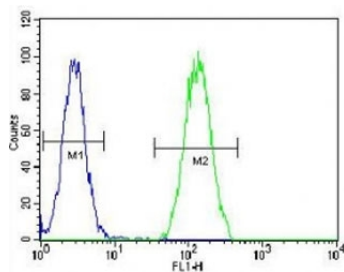
| Catalog No. | Formulation | Size |
|---------------|--|---------|
| F43310-0.4ML | In 1X PBS, pH 7.4, with 0.09% sodium azide | 0.4 ml |
| F43310-0.08ML | In 1X PBS, pH 7.4, with 0.09% sodium azide | 0.08 ml |

[Bulk quote request](#)

| | |
|-----------------------------|--|
| Availability | 1-3 business days |
| Species Reactivity | Human |
| Predicted Reactivity | Mouse, Rat, Chicken |
| Format | Antigen affinity purified |
| Host | Rabbit |
| Clonality | Polyclonal (rabbit origin) |
| Isotype | Rabbit Ig |
| Purity | Antigen affinity |
| UniProt | P12643 |
| Localization | Cytoplasmic |
| Applications | Western Blot : 1:1000 Flow Cytometry : 1:10-1:50 |
| Limitations | This BMP2 antibody is available for research use only. |

95
72
55
36
28
17

BMP2 antibody western blot analysis in human CEM lysate. Expected molecular weight:
13-14 kDa per monomer.



BMP2 antibody flow cytometric analysis of HeLa cells (green) compared to a [negative control](#) (blue). FITC-conjugated goat-anti-rabbit secondary Ab was used for the analysis.

Description

The protein encoded by this gene belongs to the transforming growth factor-beta (TGFB) superfamily. The encoded protein acts as a disulfide-linked homodimer and induces bone and cartilage formation.

Application Notes

Titration of the BMP2 antibody may be required due to differences in protocols and secondary/substrate sensitivity.

Immunogen

A portion of amino acids 260-289 from the human protein was used as the immunogen for this BMP2 antibody.

Storage

Aliquot the BMP2 antibody and store frozen at -20oC or colder. Avoid repeated freeze-thaw cycles.