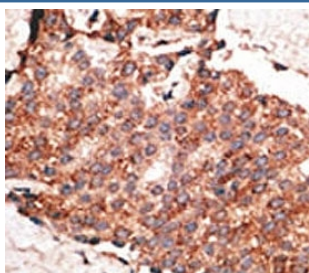


BMP1 Antibody (F45359)

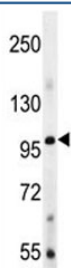
Catalog No.	Formulation	Size
F45359-0.4ML	In 1X PBS, pH 7.4, with 0.09% sodium azide	0.4 ml
F45359-0.08ML	In 1X PBS, pH 7.4, with 0.09% sodium azide	0.08 ml

[Bulk quote request](#)

Availability	1-3 business days
Species Reactivity	Mouse
Format	Purified
Host	Rabbit
Clonality	Polyclonal (rabbit origin)
Isotype	Rabbit Ig
Purity	Purified
UniProt	P13497
Applications	IHC (Paraffin) : 1:50-1:100 Western Blot : 1:1000
Limitations	This BMP1 antibody is available for research use only.



IHC analysis of FFPE human breast carcinoma tissue stained with the BMP1 antibody



BMP1 antibody western blot analysis in mouse liver tissue lysate. Predicted molecular weight: ~111 kDa.

Description

The BMP1 locus encodes a protein that is capable of inducing formation of cartilage in vivo. Although other bone morphogenetic proteins are members of the TGF-beta superfamily, BMP1 encodes a protein that is not closely related to other known growth factors. BMP1 protein and procollagen C proteinase (PCP), a secreted metalloprotease requiring calcium and needed for cartilage and bone formation, are identical. PCP or BMP1 protein cleaves the C-terminal propeptides of procollagen I, II, and III and its activity is increased by the procollagen C-endopeptidase enhancer protein. The BMP1 gene is expressed as alternatively spliced variants that share an N-terminal protease domain but differ in their C-terminal region.

Application Notes

Titration of the BMP1 antibody may be required due to differences in protocols and secondary/substrate sensitivity.

Immunogen

A portion of amino acids 957-986 from the human protein was used as the immunogen for this BMP1 antibody.

Storage

Aliquot the BMP1 antibody and store frozen at -20oC or colder. Avoid repeated freeze-thaw cycles.